



[Go to Product page](#)

Datasheet for ABIN1349168

## CERCAM Protein (AA 1-517) (GST tag)

### 1 Image

#### Overview

Quantity:	10 µg
Target:	CERCAM
Protein Characteristics:	AA 1-517
Origin:	Human
Source:	Wheat germ
Protein Type:	Recombinant
Purification tag / Conjugate:	This CERCAM protein is labelled with GST tag.
Application:	ELISA, Western Blotting (WB), Antibody Array (AA), Affinity Purification (AP)

#### Product Details

Purpose:	CEECAM1 (Human) Recombinant Protein (P01)
Sequence:	MLQEWLAAVG DDYAAVVWRP EGEPFRFYPDE EGPKHWTKER HQFLMELKQE ALTFARNWGA DYILFADTDN ILTNNQTLRL LMGQGLPVVA PMLDSQTYYS NFWCGITPQG YRRTAEYFP TKNRQRRGCF RVPMVHSTFL ASLRAEGADQ LAFYPPHPNY TWPFDDIIVF AYACQAAGVS VHVCNEHRYG YMNVPVKSHQ GLEDERVNFI HLILEALVDG PRMQASAHVT RPSKRPSKIG FDEVFVSLA RRPDRRERML ASLWEMEISG RVVDAVDGWM LNSSAIRNLG VDLLPGYQDP YSGRTLTKGE VGCFLSHYSI WEEVVARGLA RVLVFEEDVVR FESNFRGRLE RLMEVVEAEK LSWDLIYLGR KQVNPEKETA VEGLPGLVVA GYSYWTLAYA LRLAGARKLL ASQPLRRMLP VDEFLPIMFD QHPNEQYKAH FWPRDLVAFS AQPLLAAPTH YAGDAEWLSD TETSSPWDDD SGRLISWSGS QKTLRSPRLD LTGSSGHS LQ PQPRDEL
Characteristics:	Human CEECAM1 full-length ORF ( NP_057258.2, 1 a.a. - 517 a.a.) recombinant protein with GST-tag at N-terminal.

## Product Details

---

Purification: in vitro wheat germ expression system

## Target Details

---

Target: CERCAM

Alternative Name: CERCAM ([CERCAM Products](#))

Background: Full Gene Name: cerebral endothelial cell adhesion molecule  
Synonyms: CEECAM1, GLT25D3, MGC149620, MGC149621

Gene ID: 51148

NCBI Accession: [NM\\_016174](#)

## Application Details

---

Application Notes: Optimal working dilution should be determined by the investigator.

Comment: Preparation method: in vitro, wheat germ expression system  
Product Quality tested by: 12.5% SDS-PAGE Stained with Coomassie Blue.

Restrictions: For Research Use only

## Handling

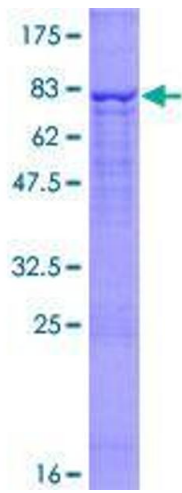
---

Buffer: 50 mM Tris-HCl, 10 mM reduced Glutathione, pH =8.0 in the elution buffer.

Handling Advice: Aliquot to avoid repeated freezing and thawing.

Storage: -80 °C

Storage Comment: Best use within three months from the date of receipt of this protein.



**Image 1.**