

Datasheet for ABIN1349211  
**CFHR2 Protein (AA 19-270) (GST tag)**



[Go to Product page](#)

1 Image

## Overview

Quantity:	10 µg
Target:	CFHR2
Protein Characteristics:	AA 19-270
Origin:	Human
Source:	Wheat germ
Protein Type:	Recombinant
Purification tag / Conjugate:	This CFHR2 protein is labelled with GST tag.
Application:	ELISA, Western Blotting (WB), Antibody Array (AA), Affinity Purification (AP)

## Product Details

Purpose:	CFHL2 (Human) Recombinant Protein (P01)
Sequence:	EAMFCDFPKI NHGILYDEEK YKPFSQVPTG EVFYYSCEYN FVSPSKSFWT RITCAEEGWS PTPKCLRLCF PPFVENGHSE SSGQTHLEGD TVQIICNTGY RLQNNENNIS CVERGWSTPP KCRSTISAEK CGPPPIDNG DITSFLLSVY APGSSVEYQC QNLYQLEGNN QITCRNGQWS EPPKCLDPCV ISQEIMEKYN IKLKWTNQQK LYSRTGDIVE FVCKSGYHPT KSHSFRAMCQ NGKLVYPSCE EK
Characteristics:	Human CFHL2 full-length ORF ( AAH22283, 19 a.a. - 270 a.a.) recombinant protein with GST-tag at N-terminal.
Purification:	in vitro wheat germ expression system

## Target Details

Target:	CFHR2
Alternative Name:	CFHR2 (CFHR2 Products)
Background:	Full Gene Name: complement factor H-related 2 Synonyms: CFHL2,FHR2,HFL3
Gene ID:	3080

## Application Details

Application Notes:	Optimal working dilution should be determined by the investigator.
Comment:	Preparation method: in vitro, wheat germ expression system Product Quality tested by: 12.5% SDS-PAGE Stained with Coomassie Blue.
Restrictions:	For Research Use only

## Handling

Buffer:	50 mM Tris-HCl, 10 mM reduced Glutathione, pH =8.0 in the elution buffer.
Handling Advice:	Aliquot to avoid repeated freezing and thawing.
Storage:	-80 °C
Storage Comment:	Best use within three months from the date of receipt of this protein.

## Images

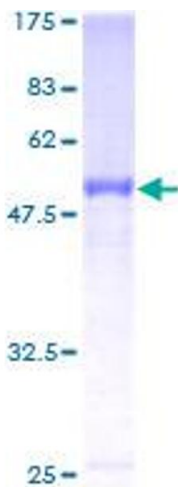


Image 1.