

Datasheet for ABIN1349213  
**CFHR5 Protein (AA 1-569) (GST tag)**



[Go to Product page](#)

1 Image

### Overview

Quantity:	10 µg
Target:	CFHR5
Protein Characteristics:	AA 1-569
Origin:	Human
Source:	Wheat germ
Protein Type:	Recombinant
Purification tag / Conjugate:	This CFHR5 protein is labelled with GST tag.
Application:	Western Blotting (WB), ELISA, Antibody Array (AA), Affinity Purification (AP)

### Product Details

Purpose:	CFHR5 (Human) Recombinant Protein (P01)
Sequence:	<p>MLLLFSVILI SWVSTVGGEG TLCDFPKIHH GFLYDEEDYN PFSQVPTGEV FYYSCEYNFV            SPSKSFWTRI TCTEEGWSPT PKCLRMCSFP FVKNGHSESS GLIHLEGDTV QIICNTGYSL            QNNEKNISCV ERGWSTPPIC SFTKGECHVP ILEANVDAQP KKESYKVGDV LKFSCRKNLI            RVGSDSVQCY QFGWSPNFPT CKGQVRSCGP PPQLSNGEVK EIRKEEYGHN EVVEYDCNPN            FIINGPKKIQ CVDGEWTTLP TCVEQVKTCG YIPELEYGYV QPSVPPYQHG VSVEVNCRNE            YAMIGNNMIT CINGIWTELP MCVATHQLKR CKIAGVNIKT LLKLSGKEFN HNSRIRYRCS            DIFRYRHSVC INGKWNPEVD CTEKREQFCP PPPQIPNAQN MTTTVNYQDG EKVAVLCKEN            YLLPEAKEIV CKDGRWQSLP RCVESTAYCG PPPSINNGDT TSFPLSVYPP GSTVTYRCQS            FYKLQGSVTV TCRNKQWSEP PRCLDPCVVS EENMNKNNIQ LKWRNDGKLY AKTGDAVEFQ            CKFPHKAMIS SPPFRAICQE GKFEYPICE</p>
Characteristics:	Human CFHR5 full-length ORF ( NP_110414.1, 1 a.a. - 569 a.a.) recombinant protein with GST-

## Product Details

---

tag at N-terminal.

Purification: in vitro wheat germ expression system

## Target Details

---

Target: CFHR5

Alternative Name: CFHR5 ([CFHR5 Products](#))

Background: Gene: complement factor H-related 5  
Synonyms: CFHL5, FHR-5, FHR5, FLJ10549, MGC133240

Gene ID: 81494

NCBI Accession: [NM\\_030787](#)

## Application Details

---

Application Notes: Optimal working dilution should be determined by the investigator.

Restrictions: For Research Use only

## Handling

---

Buffer: 50 mM Tris-HCl, 10 mM reduced Glutathione, pH =8.0 in the elution buffer.

Handling Advice: Aliquot to avoid repeated freezing and thawing.

Storage: -80 °C

Storage Comment: Best use within three months from the date of receipt of this protein.

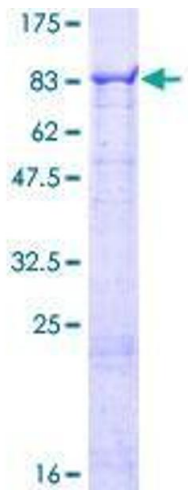


Image 1.