

Datasheet for ABIN1349253

CGGBP1 Protein (AA 58-167) (GST tag)[Go to Product page](#)**1** Image

Overview

Quantity:	10 µg
Target:	CGGBP1
Protein Characteristics:	AA 58-167
Origin:	Human
Source:	Wheat germ
Protein Type:	Recombinant
Purification tag / Conjugate:	This CGGBP1 protein is labelled with GST tag.
Application:	ELISA, Western Blotting (WB), Antibody Array (AA), Affinity Purification (AP)

Product Details

Purpose:	CGGBP1 (Human) Recombinant Protein (Q01)
Sequence:	ISDHLKSKTH TKRKAEFEEQ NVRKKQRPLT ASLQCNSTAQ TEKVSVIQDF VKMCLEANIP LEKADHPAVR AFLSRHVKNG GSIPKSDQLR RAYLPDGYEN ENQLLNSQDC
Characteristics:	Human CGGBP1 partial ORF (NP_003654, 58 a.a. - 167 a.a.) recombinant protein with GST-tag at N-terminal.
Purification:	in vitro wheat germ expression system

Target Details

Target:	CGGBP1
Alternative Name:	CGGBP1 (CGGBP1 Products)

Target Details

Background: Full Gene Name: CGG triplet repeat binding protein 1
Synonyms: CGGBP,p20-CGGBP

Gene ID: 8545

NCBI Accession: [NM_003663](#)

Application Details

Application Notes: Optimal working dilution should be determined by the investigator.

Comment: Preparation method: in vitro, wheat germ expression system
Product Quality tested by: 12.5% SDS-PAGE Stained with Coomassie Blue.

Restrictions: For Research Use only

Handling

Buffer: 50 mM Tris-HCl, 10 mM reduced Glutathione, pH =8.0 in the elution buffer.

Handling Advice: Aliquot to avoid repeated freezing and thawing.

Storage: -80 °C

Storage Comment: Best use within three months from the date of receipt of this protein.

Images

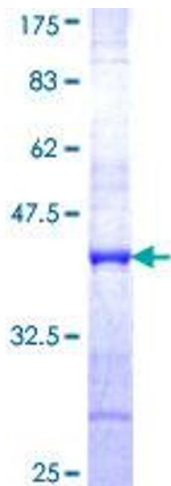


Image 1.