



[Go to Product page](#)

Datasheet for ABIN1349272

CHAF1A Protein (AA 21-120) (GST tag)

1 Image

Overview

Quantity:	10 µg
Target:	CHAF1A
Protein Characteristics:	AA 21-120
Origin:	Human
Source:	Wheat germ
Protein Type:	Recombinant
Purification tag / Conjugate:	This CHAF1A protein is labelled with GST tag.
Application:	ELISA, Western Blotting (WB), Antibody Array (AA), Affinity Purification (AP)

Product Details

Purpose:	CHAF1A (Human) Recombinant Protein (Q01)
Sequence:	CKDRPAFPVK KLIQARLPFK RLNLVPKGKA DDMSDDQGTS VQSKSPDLEA SLDTLENNCH VGSDIDFRPK LVNGKGPLDN FLRNRIETSI GQSTVIIDL
Characteristics:	Human CHAF1A partial ORF (AAH67093, 21 a.a. - 120 a.a.) recombinant protein with GST-tag at N-terminal.
Purification:	in vitro wheat germ expression system

Target Details

Target:	CHAF1A
Alternative Name:	CHAF1A (CHAF1A Products)

Target Details

Background:	Full Gene Name: chromatin assembly factor 1, subunit A (p150) Synonyms: CAF-1,CAF1,CAF1B,CAF1P150,MGC71229,P150
Gene ID:	10036

Application Details

Application Notes:	Optimal working dilution should be determined by the investigator.
Comment:	Preparation method: in vitro, wheat germ expression system Product Quality tested by: 12.5% SDS-PAGE Stained with Coomassie Blue.
Restrictions:	For Research Use only

Handling

Buffer:	50 mM Tris-HCl, 10 mM reduced Glutathione, pH =8.0 in the elution buffer.
Handling Advice:	Aliquot to avoid repeated freezing and thawing.
Storage:	-80 °C
Storage Comment:	Best use within three months from the date of receipt of this protein.

Images

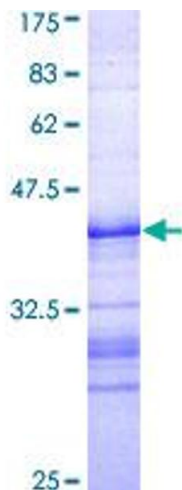


Image 1.