

Datasheet for ABIN1349296  
**CHD8 Protein (AA 1980-2078) (GST tag)**



[Go to Product page](#)

1 Image

Overview

Quantity:	10 µg
Target:	CHD8
Protein Characteristics:	AA 1980-2078
Origin:	Human
Source:	Wheat germ
Protein Type:	Recombinant
Purification tag / Conjugate:	This CHD8 protein is labelled with GST tag.
Application:	Western Blotting (WB), Antibody Array (AA), Affinity Purification (AP), ELISA

Product Details

Purpose:	CHD8 (Human) Recombinant Protein (Q01)
Sequence:	EGLKLTFFQKH KLMANGVMGD GHPLFHKKKG NRKKLVELEV ECMEEP NHLD VDLETRIPVI NKVDGTL LVG EDAPRRAELE MWLQGHPEFA VDPRFLAYM
Characteristics:	Human CHD8 partial ORF ( NP_065971, 1980 a.a. - 2078 a.a.) recombinant protein with GST-tag at N-terminal.
Purification:	in vitro wheat germ expression system

Target Details

Target:	CHD8
Alternative Name:	CHD8 ( <a href="#">CHD8 Products</a> )

## Target Details

Background:	Full Gene Name: chromodomain helicase DNA binding protein 8 Synonyms: DKFZp686N17164,HELSNF1,KIAA1564
Gene ID:	57680
NCBI Accession:	<a href="#">NM_020920</a>
Pathways:	<a href="#">Chromatin Binding</a>

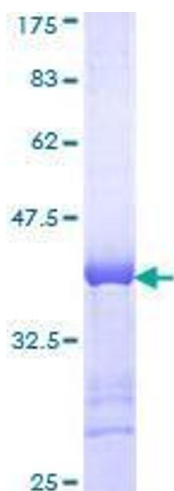
## Application Details

Application Notes:	Optimal working dilution should be determined by the investigator.
Comment:	Preparation method: in vitro, wheat germ expression system Product Quality tested by: 12.5% SDS-PAGE Stained with Coomassie Blue.
Restrictions:	For Research Use only

## Handling

Buffer:	50 mM Tris-HCl, 10 mM reduced Glutathione, pH =8.0 in the elution buffer.
Handling Advice:	Aliquot to avoid repeated freezing and thawing.
Storage:	-80 °C
Storage Comment:	Best use within three months from the date of receipt of this protein.

## Images



**Image 1.**