

Datasheet for ABIN1349301
CHEK1 Protein (GST tag)



[Go to Product page](#)

1 Image

Overview

Quantity:	10 µg
Target:	CHEK1
Origin:	Human
Source:	Wheat germ
Protein Type:	Recombinant
Purification tag / Conjugate:	This CHEK1 protein is labelled with GST tag.
Application:	Western Blotting (WB), ELISA, Antibody Array (AA), Affinity Purification (AP)

Product Details

Purpose:	CHEK1 (Human) Recombinant Protein (P01)
Sequence:	MAVPFVEDWD LVQTLGEGAY GEVQLAVNRV TEEAVAVKIV DMKRAVDCPE NIKKEICINK MLNHENVVKF YGHRREGNIQ YLFLEYCSGG ELFDRIEPI GMPEPDAQRF FHQLMAGVVY LHGIGITHRD IKPENLLLDE RDNLKISDFG LATVFRYNNR ERLLNKMCMT LPYVAPELLK RREFHAEPVD VWSCGIVLTA MLAGELPWDQ PSDSCQEYSD WKEKKTYLNP WKKIDSAPLA LLHKILVENP SARITIPDIK KDRWYNKPLK KGAKRPRVTS GGVSESPSGF SKHIQSNLDF SPVNSASSE NVKYSSSQPE PRTGLSLWDT SPSYIDKLVQ GISFSQPTCP DHMLLSQLL GTPGSSQNPW QRLVKRMTRF FTKLDADKPY QCLKETREKL GYQWKKSCMN QVTISTTDRR NNKLIFKVN LEMDDKILVD FRLSKGDGLE FKRHFLKIKG KLIDIVSSQK VWLPAT
Characteristics:	Human CHEK1 full-length ORF (AAH04202, 1 a.a. - 476 a.a.) recombinant protein with GST-tag at N-terminal.
Purification:	in vitro wheat germ expression system

Target Details

Target:	CHEK1
Alternative Name:	CHEK1 (CHEK1 Products)
Background:	Gene: CHK1 checkpoint homolog (S. pombe) Synonyms: CHK1
Gene ID:	1111
Pathways:	p53 Signaling , Apoptosis , Cell Division Cycle , DNA Damage Repair

Application Details

Application Notes:	Optimal working dilution should be determined by the investigator.
Restrictions:	For Research Use only

Handling

Buffer:	50 mM Tris-HCl, 10 mM reduced Glutathione, pH =8.0 in the elution buffer.
Handling Advice:	Aliquot to avoid repeated freezing and thawing.
Storage:	-80 °C
Storage Comment:	Best use within three months from the date of receipt of this protein.

Images

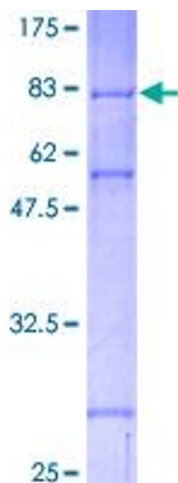


Image 1.