



[Go to Product page](#)

Datasheet for ABIN1349305

CHEK2 Protein (AA 1-543) (GST tag)

1 Image

2 Publications

Overview

Quantity:	10 µg
Target:	CHEK2
Protein Characteristics:	AA 1-543
Origin:	Human
Source:	Wheat germ
Protein Type:	Recombinant
Purification tag / Conjugate:	This CHEK2 protein is labelled with GST tag.
Application:	Western Blotting (WB), ELISA, Antibody Array (AA), Affinity Purification (AP)

Product Details

Purpose:	CHEK2 (Human) Recombinant Protein (P01)
Sequence:	MSRES DVEAQ QSHGSSACSQ PHGSVTQSQG SSSQSQGISS SSTSTMPNSS QSSHSSSGTL SSLETVSTQE LYSIPEDQEP EDQEPEEPTP APWARLWALQ DGFANLECVN DNYWFGDRKS CEYCFDEPLL KRTDKYRTYS KKHFRIFREV GPKNSYIAYI EDHSGNGTFV NTELVGKGKR RPLNNNSEIA LLSRNKVFV FFDLTVDDQS VYPKALRDEY IMSKTLGSGA CGEVKLA FER KTCKKVAIKI ISKRKFAIGS AREADPALNV ETEIEILKKL NHPCIIKIKN FFDAEDYYIV LELMEGGELF DKVVG NKRLK EATCKLYFYQ MLLAVQYLHE NGIIHRDLKP ENVLLSSQEE DCLIKITDFG HSKILGETSL MRTLCGTPTY LAPEVLVSVG TAGYNRAVDC WSLGVILFIC LSGYPPFSEH RTQVSLKDQI TSGKYNFIPE VVAEVSEKAL DLVKKLLVVD PKARFTTEEA LRHPWLQDED MKRKFQDLLS EENESTALPQ VLAQPSTSRK RPREGEAEGA ETTKRPAVCA AVL
Characteristics:	Human CHEK2 full-length ORF (AAH04207.1, 1 a.a. - 543 a.a.) recombinant protein with GST-tag at N-terminal.

Product Details

Purification: in vitro wheat germ expression system

Target Details

Target: CHEK2

Alternative Name: CHEK2 ([CHEK2 Products](#))

Background: Full Gene Name: CHK2 checkpoint homolog (S. pombe)
Synonyms: CDS1,CHK2,HuCds1,LFS2,PP1425,RAD53

Gene ID: 11200

Pathways: [p53 Signaling](#), [Apoptosis](#), [Cell Division Cycle](#)

Application Details

Application Notes: Optimal working dilution should be determined by the investigator.

Comment: Preparation method: in vitro, wheat germ expression system
Product Quality tested by: 12.5% SDS-PAGE Stained with Coomassie Blue.

Restrictions: For Research Use only

Handling

Buffer: 50 mM Tris-HCl, 10 mM reduced Glutathione, pH =8.0 in the elution buffer.

Handling Advice: Aliquot to avoid repeated freezing and thawing.

Storage: -80 °C

Storage Comment: Best use within three months from the date of receipt of this protein.

Publications

Product cited in: Troncale, Barbet, Coulibaly, Henry, He, Barillot, Dubois, Hupé, de Koning: "NormaCurve: a SuperCurve-based method that simultaneously quantifies and normalizes reverse phase protein array data." in: **PLoS ONE**, Vol. 7, Issue 6, pp. e38686, (2012) ([PubMed](#)).

Yang, Chevolut, Géhin, Solassol, Mange, Souteyrand, Laurenceau: "Improvement of protein immobilization for the elaboration of tumor-associated antigen microarrays: application to the sensitive and specific detection of tumor markers from breast cancer sera." in: **Biosensors & bioelectronics**, Vol. 40, Issue 1, pp. 385-92, (2012) ([PubMed](#)).

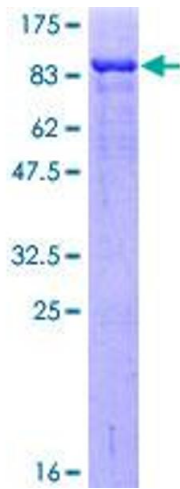


Image 1.