



[Go to Product page](#)

Datasheet for ABIN1349344

CHML Protein (AA 1-656) (GST tag)

1 Image

Overview

Quantity:	10 µg
Target:	CHML
Protein Characteristics:	AA 1-656
Origin:	Human
Source:	Wheat germ
Protein Type:	Recombinant
Purification tag / Conjugate:	This CHML protein is labelled with GST tag.
Application:	ELISA, Western Blotting (WB), Antibody Array (AA), Affinity Purification (AP)

Product Details

Purpose:	CHML (Human) Recombinant Protein (P01)
Sequence:	MADNLPTEFD VVIIGTGLPE SILAAACRSR GQRVLHIDSR SYYGGNWASF SFGLLSWLK EYQQNNDIGE ESTVVWQDLI HETEEAITLR KKDETIQHTE AFCYASQDME DNVEEIGALQ KNPSLGVSNT FTEVLDSALP EESQLSYFNS DEMPAKHTQK SDTEISLEVT DVEESVEKEK YCGDKTCMHT VSDKDGDKDE SKSTVEDKAD EPIRNRITYS QIVKEGRRFN IDLVSKLLYS QGLLIDLLIK SDVSRVFEFK NVTRILAFRE GKVEQVPCSR ADVFNSKELT MVEKRMLMKF LTFCLEYEQH PDEYQAFRQC SFSEYLKTKK LTPNLQHFVL HSIAMTSESS CTTIDGLNAT KNFLQCLGRF GNTPFLLPLY GQGEIPQGFC RMCAVFGGIY CLRHKVQCFV VDKESGRCKA IIDHFGQRIN AKYFIVEDSY LSEETCSNVQ YKQISRVLV TDQSILKTDL DQQTSILIVP PAEPGACAVR VTELCSSMT CMKDTYLVHL TCSSSKTARE DLESVVKKLF TPYTETEINE EELTKPRLLW ALYFNMRDSS GISRSSYNGL PSNVYVCSGP DCGLGNEHAV KQAETLFQEI FPTEEFCEPPP PNPEDIIFDG DDKQPEAPGT NNVVMAKLES SEESKNLESP EKHLQN

Product Details

Characteristics:	Human CHML full-length ORF (NP_001812.2, 1 a.a. - 656 a.a.) recombinant protein with GST-tag at N-terminal.
Purification:	in vitro wheat germ expression system

Target Details

Target:	CHML
Alternative Name:	CHML (CHML Products)
Background:	Full Gene Name: choroideremia-like (Rab escort protein 2) Synonyms: FLJ10071,FLJ13361,REP2
Gene ID:	1122
NCBI Accession:	NM_001821

Application Details

Application Notes:	Optimal working dilution should be determined by the investigator.
Comment:	Preparation method: in vitro, wheat germ expression system Product Quality tested by: 12.5% SDS-PAGE Stained with Coomassie Blue.
Restrictions:	For Research Use only

Handling

Buffer:	50 mM Tris-HCl, 10 mM reduced Glutathione, pH =8.0 in the elution buffer.
Handling Advice:	Aliquot to avoid repeated freezing and thawing.
Storage:	-80 °C
Storage Comment:	Best use within three months from the date of receipt of this protein.

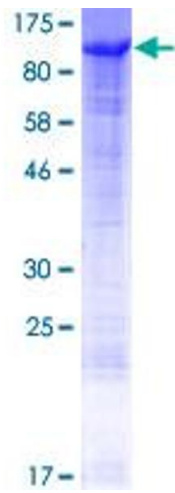


Image 1.