

Datasheet for ABIN1349351

CHMP1B Protein (AA 1-199) (GST tag)



[Go to Product page](#)

1 Image

Overview

Quantity:	10 µg
Target:	CHMP1B
Protein Characteristics:	AA 1-199
Origin:	Human
Source:	Wheat germ
Protein Type:	Recombinant
Purification tag / Conjugate:	This CHMP1B protein is labelled with GST tag.
Application:	ELISA, Western Blotting (WB), Antibody Array (AA), Affinity Purification (AP)

Product Details

Purpose:	CHMP1B (Human) Recombinant Protein (P01)
Sequence:	MSNMEKHLFN LKFAAKELSR SAKKCDKEEK AEKAKIKKAI QKGNMEVARI HAENAIROKN QAVNFLRMSA RVDAAVARVQ TAVTMGKVTK SMAGVVKSMD ATLKTMNLEK ISALMDKFEH QFETLDVQTQ QMEDTMSSTT TLTPQNQVD MLLQEMADEA GLDLNMELPQ GQTGSVGTSTV ASAEQDELSQ RLARLRDQV
Characteristics:	Human CHMP1B full-length ORF (NP_065145.2, 1 a.a. - 199 a.a.) recombinant protein with GST-tag at N-terminal.
Purification:	in vitro wheat germ expression system

Target Details

Target:	CHMP1B
---------	--------

Target Details

Alternative Name:	CHMP1B (CHMP1B Products)
Background:	Full Gene Name: chromatin modifying protein 1B Synonyms: C10orf2,C18-ORF2,C18orf2,CHMP1.5,Vps46-2
Gene ID:	57132
NCBI Accession:	NM_020412

Application Details

Application Notes:	Optimal working dilution should be determined by the investigator.
Comment:	Preparation method: in vitro, wheat germ expression system Product Quality tested by: 12.5% SDS-PAGE Stained with Coomassie Blue.
Restrictions:	For Research Use only

Handling

Buffer:	50 mM Tris-HCl, 10 mM reduced Glutathione, pH =8.0 in the elution buffer.
Handling Advice:	Aliquot to avoid repeated freezing and thawing.
Storage:	-80 °C
Storage Comment:	Best use within three months from the date of receipt of this protein.

Images

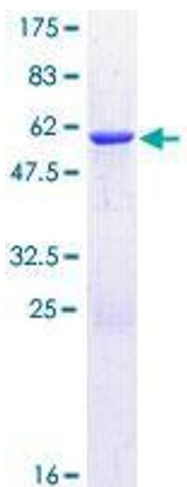


Image 1.