



[Go to Product page](#)

Datasheet for ABIN1349353

CHMP1B Protein (AA 145-199) (GST tag)

1 Image

Overview

Quantity:	10 µg
Target:	CHMP1B
Protein Characteristics:	AA 145-199
Origin:	Human
Source:	Wheat germ
Protein Type:	Recombinant
Purification tag / Conjugate:	This CHMP1B protein is labelled with GST tag.
Application:	ELISA, Western Blotting (WB), Antibody Array (AA), Affinity Purification (AP)

Product Details

Purpose:	CHMP1B (Human) Recombinant Protein (Q01)
Sequence:	PQNQVDMLLQ EMADEAGLDL NMELPQGQTG SVGTSVASAE QDELSQRLAR LRDQV
Characteristics:	Human CHMP1B partial ORF (NP_065145, 145 a.a. - 199 a.a.) recombinant protein with GST-tag at N-terminal.
Purification:	in vitro wheat germ expression system

Target Details

Target:	CHMP1B
Alternative Name:	CHMP1B (CHMP1B Products)
Background:	Full Gene Name: chromatin modifying protein 1B

Target Details

Synonyms: C10orf2,C18-ORF2,C18orf2,CHMP1.5,Vps46-2

Gene ID: 57132

NCBI Accession: [NM_020412](#)

Application Details

Application Notes: Optimal working dilution should be determined by the investigator.

Comment: Preparation method: in vitro, wheat germ expression system
Product Quality tested by: 12.5% SDS-PAGE Stained with Coomassie Blue.

Restrictions: For Research Use only

Handling

Buffer: 50 mM Tris-HCl, 10 mM reduced Glutathione, pH =8.0 in the elution buffer.

Handling Advice: Aliquot to avoid repeated freezing and thawing.

Storage: -80 °C

Storage Comment: Best use within three months from the date of receipt of this protein.

Images

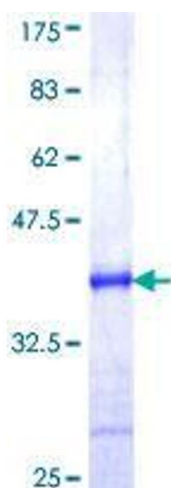


Image 1.