



[Go to Product page](#)

Datasheet for ABIN1349355

## CHMP2A Protein (AA 1-222) (GST tag)

### 1 Image

#### Overview

Quantity:	10 µg
Target:	CHMP2A
Protein Characteristics:	AA 1-222
Origin:	Human
Source:	Wheat germ
Protein Type:	Recombinant
Purification tag / Conjugate:	This CHMP2A protein is labelled with GST tag.
Application:	ELISA, Western Blotting (WB), Antibody Array (AA), Affinity Purification (AP)

#### Product Details

Purpose:	CHMP2A (Human) Recombinant Protein (P01)
Sequence:	MDLLFGRRKT PEELLRQNQR ALNRAMRELD RERQKLETQE KKIIADIKKM AKQGQMDAVR IMAKDLVRTR RYVRKFVLMR ANIQAVSLKI QTLKSNNSMA QAMKGVTKAM GTMNRQLKLP QIQKIMMEFE RQAEIMDMKE EMMNDAIDDA MGDEEDEEES DAVVSQVLDE LGLSLTDELS NLPSTGGSL SVAAGGKKA EA AASALADADA DLEERLKNLR RD
Characteristics:	Human CHMP2A full-length ORF ( NP_055268, 1 a.a. - 222 a.a.) recombinant protein with GST-tag at N-terminal.
Purification:	in vitro wheat germ expression system

#### Target Details

Target:	CHMP2A
---------	--------

## Target Details

Alternative Name:	CHMP2A ( <a href="#">CHMP2A Products</a> )
Background:	Full Gene Name: chromatin modifying protein 2A Synonyms: BC-2,BC2,CHMP2,VPS2,VPS2A
Gene ID:	27243
Pathways:	<a href="#">SARS-CoV-2 Protein Interactome</a>

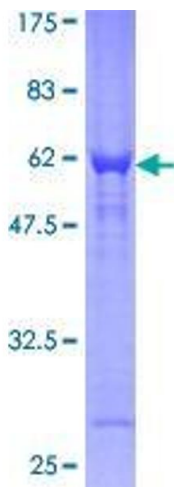
## Application Details

Application Notes:	Optimal working dilution should be determined by the investigator.
Comment:	Preparation method: in vitro, wheat germ expression system Product Quality tested by: 12.5% SDS-PAGE Stained with Coomassie Blue.
Restrictions:	For Research Use only

## Handling

Buffer:	50 mM Tris-HCl, 10 mM reduced Glutathione, pH =8.0 in the elution buffer.
Handling Advice:	Aliquot to avoid repeated freezing and thawing.
Storage:	-80 °C
Storage Comment:	Best use within three months from the date of receipt of this protein.

## Images



**Image 1.**