

Datasheet for ABIN1349388

## Muscarinic Acetylcholine Receptor M2 Protein (AA 251-350) (GST tag)



[Go to Product page](#)

### 1 Image

#### Overview

Quantity:	10 µg
Target:	Muscarinic Acetylcholine Receptor M2 (CHRM2)
Protein Characteristics:	AA 251-350
Origin:	Human
Source:	Wheat germ
Protein Type:	Recombinant
Purification tag / Conjugate:	This Muscarinic Acetylcholine Receptor M2 protein is labelled with GST tag.
Application:	Western Blotting (WB), ELISA, Affinity Purification (AP), Antibody Array (AA)

#### Product Details

Purpose:	CHRM2 (Human) Recombinant Protein (Q01)
Sequence:	SDDGLEHNKI QNGKAPRDPV TENCVQGEEK ESSNDSTSVS AVASNMRDDE ITQDENTVST SLGHSKDENS KQTCIRIGTK TPKSDSCTPT NTTVEVVGSS
Characteristics:	Human CHRM2 partial ORF ( AAI06743.1, 251 a.a. - 350 a.a.) recombinant protein with GST-tag at N-terminal.
Purification:	in vitro wheat germ expression system

#### Target Details

Target:	Muscarinic Acetylcholine Receptor M2 (CHRM2)
Alternative Name:	CHRM2 ( <a href="#">CHRM2 Products</a> )

## Target Details

Background:	Full Gene Name: cholinergic receptor, muscarinic 2 Synonyms: FLJ43243, HM2, MGC120006, MGC120007
Gene ID:	1129
NCBI Accession:	<a href="#">NM_000739</a>

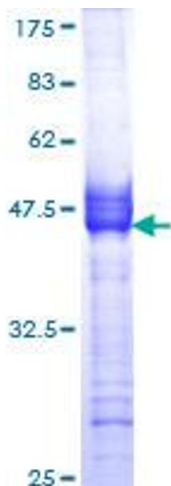
## Application Details

Application Notes:	Optimal working dilution should be determined by the investigator.
Comment:	Preparation method: in vitro, wheat germ expression system Product Quality tested by: 12.5% SDS-PAGE Stained with Coomassie Blue.
Restrictions:	For Research Use only

## Handling

Buffer:	50 mM Tris-HCl, 10 mM reduced Glutathione, pH =8.0 in the elution buffer.
Handling Advice:	Aliquot to avoid repeated freezing and thawing.
Storage:	-80 °C
Storage Comment:	Best use within three months from the date of receipt of this protein.

## Images



**Image 1.**