



[Go to Product page](#)

Datasheet for ABIN1349435

CHST13 Protein (AA 1-225) (GST tag)

1 Image

Overview

Quantity:	25 µg
Target:	CHST13
Protein Characteristics:	AA 1-225
Origin:	Human
Source:	Wheat germ
Protein Type:	Recombinant
Purification tag / Conjugate:	This CHST13 protein is labelled with GST tag.
Application:	ELISA, Western Blotting (WB), Antibody Array (AA), Affinity Purification (AP)

Product Details

Purpose:	CHST13 (Human) Recombinant Protein (P01)
Sequence:	MGRRCRRRV LAAACLGAAL LLLCAAPRSL RPAFGNRLG SSWLGGEKRS PLQKLYDLDDQ DPRSTLAKVH RQRRDLLNSA CSRHSRRQRL LQPEDLRHVL VDDAHGLLYC YVPKVACTNW KRVLLALSGQ ARGDPRAISA QEAHAPGRLP SLADFSPAIE NRRLRAYLAF LRVREPFERL ASAYRNKLAR TRSATRVASA TTSWASSRRW RRTRPSCWAW RAHPT
Characteristics:	Human CHST13 full-length ORF (AAI03897.1, 1 a.a. - 225 a.a.) recombinant protein with GST-tag at N-terminal.
Purification:	in vitro wheat germ expression system

Target Details

Target:	CHST13
---------	--------

Target Details

Alternative Name:	CHST13 (CHST13 Products)
Background:	Full Gene Name: carbohydrate (chondroitin 4) sulfotransferase 13 Synonyms: C4ST3,MGC119278,MGC119279,MGC119281
Gene ID:	166012
Pathways:	Glycosaminoglycan Metabolic Process

Application Details

Application Notes:	Optimal working dilution should be determined by the investigator.
Comment:	Preparation method: in vitro, wheat germ expression system Product Quality tested by: 12.5% SDS-PAGE Stained with Coomassie Blue.
Restrictions:	For Research Use only

Handling

Buffer:	50 mM Tris-HCl, 10 mM reduced Glutathione, pH =8.0 in the elution buffer.
Handling Advice:	Aliquot to avoid repeated freezing and thawing.
Storage:	-80 °C
Storage Comment:	Best use within three months from the date of receipt of this protein.

Images

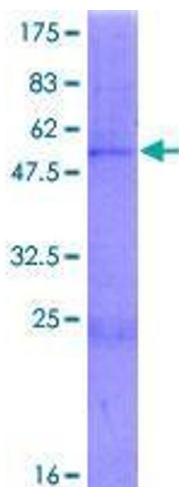


Image 1.