



[Go to Product page](#)

Datasheet for ABIN1349498

## CIRBP Protein (AA 1-90) (GST tag)

### 1 Image

#### Overview

|                               |                                                                               |
|-------------------------------|-------------------------------------------------------------------------------|
| Quantity:                     | 10 µg                                                                         |
| Target:                       | CIRBP                                                                         |
| Protein Characteristics:      | AA 1-90                                                                       |
| Origin:                       | Human                                                                         |
| Source:                       | Wheat germ                                                                    |
| Protein Type:                 | Recombinant                                                                   |
| Purification tag / Conjugate: | This CIRBP protein is labelled with GST tag.                                  |
| Application:                  | Western Blotting (WB), ELISA, Antibody Array (AA), Affinity Purification (AP) |

#### Product Details

|                  |                                                                                                          |
|------------------|----------------------------------------------------------------------------------------------------------|
| Purpose:         | CIRBP (Human) Recombinant Protein (Q01)                                                                  |
| Sequence:        | MASDEGKLFV GGLSFDTNEQ SLEQVFSKYG QISEVWVKD RETQSRGFG FVTFENIDDA<br>KDAMMAMNGK SVDGRQIRVD QAGKSSDNRS      |
| Characteristics: | Human CIRBP partial ORF ( NP_001271.1, 1 a.a. - 90 a.a.) recombinant protein with GST-tag at N-terminal. |
| Purification:    | in vitro wheat germ expression system                                                                    |

#### Target Details

|                   |                                          |
|-------------------|------------------------------------------|
| Target:           | CIRBP                                    |
| Alternative Name: | CIRBP ( <a href="#">CIRBP Products</a> ) |

## Target Details

|                 |                                                                      |
|-----------------|----------------------------------------------------------------------|
| Background:     | Full Gene Name: cold inducible RNA binding protein<br>Synonyms: CIRP |
| Gene ID:        | 1153                                                                 |
| NCBI Accession: | <a href="#">NM_001280</a>                                            |
| Pathways:       | <a href="#">Ribonucleoprotein Complex Subunit Organization</a>       |

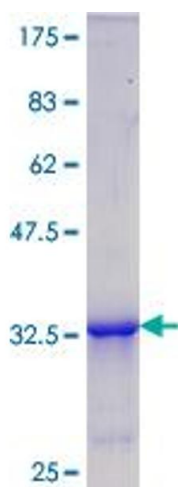
## Application Details

|                    |                                                                                                                                      |
|--------------------|--------------------------------------------------------------------------------------------------------------------------------------|
| Application Notes: | Optimal working dilution should be determined by the investigator.                                                                   |
| Comment:           | Preparation method: in vitro, wheat germ expression system<br>Product Quality tested by: 12.5% SDS-PAGE Stained with Coomassie Blue. |
| Restrictions:      | For Research Use only                                                                                                                |

## Handling

|                  |                                                                           |
|------------------|---------------------------------------------------------------------------|
| Buffer:          | 50 mM Tris-HCl, 10 mM reduced Glutathione, pH =8.0 in the elution buffer. |
| Handling Advice: | Aliquot to avoid repeated freezing and thawing.                           |
| Storage:         | -80 °C                                                                    |
| Storage Comment: | Best use within three months from the date of receipt of this protein.    |

## Images



**Image 1.**