



[Go to Product page](#)

Datasheet for ABIN1349509

CISH Protein (AA 1-258) (GST tag)

1 Image

Overview

Quantity:	10 µg
Target:	CISH
Protein Characteristics:	AA 1-258
Origin:	Human
Source:	Wheat germ
Protein Type:	Recombinant
Purification tag / Conjugate:	This CISH protein is labelled with GST tag.
Application:	Western Blotting (WB), ELISA, Antibody Array (AA), Affinity Purification (AP)

Product Details

Purpose:	CISH (Human) Recombinant Protein (P02)
Sequence:	MVLCVQGPRP LLAVERTGQR PLWAPSLELP KPVMQPLPAG AFLEEVAEGT PAQTESEPKV LDPEEDLLCI AKTFSYLRES GWYWGSITAS EARQHLQKMP EGTFVLVDST HPSYLFITLSV KTTRGPTNVR IEYADSSFRL DSNCLSRPRI LAFPDVSVSLV QHYVASCTAD TRSDSPDPAP TPALPMPKED APSDPALPAP PPATAVHLKL VQPFVRRSSA RSLQHLCLRV INRLVADVDC LPLPRRMADY LRQYPFQL
Characteristics:	Human CISH full-length ORF (NP_659508.1, 1 a.a. - 258 a.a.) recombinant protein with GST-tag at N-terminal.
Purification:	in vitro wheat germ expression system

Target Details

Target:	CISH
Alternative Name:	CISH (CISH Products)
Background:	Full Gene Name: cytokine inducible SH2-containing protein Synonyms: CIS,CIS-1,G18,SOCS
Gene ID:	1154
NCBI Accession:	NM_145071
Pathways:	JAK-STAT Signaling , Response to Growth Hormone Stimulus

Application Details

Application Notes:	Optimal working dilution should be determined by the investigator.
Comment:	Preparation method: in vitro, wheat germ expression system Product Quality tested by: 12.5% SDS-PAGE Stained with Coomassie Blue.
Restrictions:	For Research Use only

Handling

Buffer:	50 mM Tris-HCl, 10 mM reduced Glutathione, pH =8.0 in the elution buffer.
Handling Advice:	Aliquot to avoid repeated freezing and thawing.
Storage:	-80 °C
Storage Comment:	Best use within three months from the date of receipt of this protein.

Images

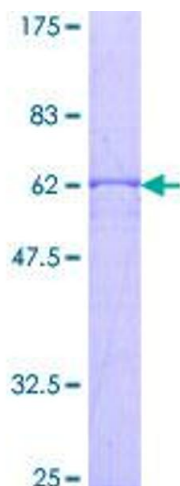


Image 1.