



[Go to Product page](#)

Datasheet for ABIN1349549

## CLASP2 Protein (AA 1-431) (GST tag)

### 1 Image

#### Overview

Quantity:	10 µg
Target:	CLASP2
Protein Characteristics:	AA 1-431
Origin:	Human
Source:	Wheat germ
Protein Type:	Recombinant
Purification tag / Conjugate:	This CLASP2 protein is labelled with GST tag.
Application:	ELISA, Western Blotting (WB), Antibody Array (AA), Affinity Purification (AP)

#### Product Details

Purpose:	CLASP2 (Human) Recombinant Protein (P01)
Sequence:	<p>MRRLLICKRIC DYKSFDDDEES VDGNRPSSAA SAFKVPAPKT SGNPANSARK PGSAGGPKVG GASKEGGAGA VDEDDFIKAF TDVPSIQIYS SRELEETLNK IREILSDDKH DWDQRANALK KIRSLLVAGA AQYDCFFQHL RLLDGALKLS AKDLRSQVVR EACITVAHLS TVLGNKFDHG AEAIVPTLFN LVPNSAKVMA TSGCAAIRFI IRHTHVPRLI PLITSNCTSK SVPVRRRSFE FLDLLLQEWQ THSLERHAAV LVETIKKGIH DADAEARVEA RKTYMGLRNH FPGEAETLYN SLEPSYQKSL QTYLKSSGSV ASLPQSDRSS SSSQESLNRP FSSKWSTANP STVAGRVSAG SSKASSLPGS LQRSRSIDIV NAAAGAKAHH AAGQSVRSRGR LGAGALNAGS YASLECEAFW RSGRTAKLYS V</p>
Characteristics:	Human CLASP2 full-length ORF ( AAH29035, 1 a.a. - 431 a.a.) recombinant protein with GST-tag at N-terminal.

## Product Details

---

Purification: in vitro wheat germ expression system

## Target Details

---

Target: CLASP2

Alternative Name: CLASP2 ([CLASP2 Products](#))

Background: Full Gene Name: cytoplasmic linker associated protein 2  
Synonyms:

Gene ID: 23122

Pathways: [Microtubule Dynamics](#), [Maintenance of Protein Location](#)

## Application Details

---

Application Notes: Optimal working dilution should be determined by the investigator.

Comment: Preparation method: in vitro, wheat germ expression system  
Product Quality tested by: 12.5% SDS-PAGE Stained with Coomassie Blue.

Restrictions: For Research Use only

## Handling

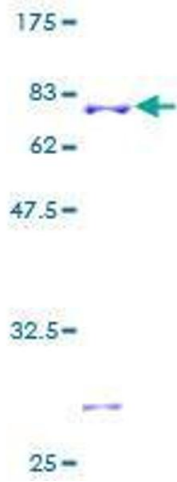
---

Buffer: 50 mM Tris-HCl, 10 mM reduced Glutathione, pH =8.0 in the elution buffer.

Handling Advice: Aliquot to avoid repeated freezing and thawing.

Storage: -80 °C

Storage Comment: Best use within three months from the date of receipt of this protein.



**Image 1.**