



[Go to Product page](#)

Datasheet for ABIN1349561

CLCF1 Protein (AA 29-225) (GST tag)

1 Image

Overview

Quantity:	10 µg
Target:	CLCF1
Protein Characteristics:	AA 29-225
Origin:	Human
Source:	Wheat germ
Protein Type:	Recombinant
Purification tag / Conjugate:	This CLCF1 protein is labelled with GST tag.
Application:	Western Blotting (WB), ELISA, Antibody Array (AA), Affinity Purification (AP)

Product Details

Purpose:	CLCF1 (Human) Recombinant Protein (P01)
Sequence:	NRTGDPGPGP SIQKTYDLTR YLEHQLRSLA GTYLNLYLGGP FNEPDFNPPR LGAETLPRAT VDLEVWRSLN DKLRLTQNYE AYSHLLCYLR GLNRQAATAE LRRSLAHFCT SLQGLLGSIA GVMAALGYPL PQPLPGTEPT WTPGPAHSDF LQKMDDFWLL KELQTLWLRWRS AKDFNRLKKK MQPPAAAVTL HLGAGHF
Characteristics:	Human CLCF1 full-length ORF (AAH12939, 29 a.a. - 225 a.a.) recombinant protein with GST-tag at N-terminal.
Purification:	in vitro wheat germ expression system

Target Details

Target:	CLCF1
---------	-------

Target Details

Alternative Name:	CLCF1 (CLCF1 Products)
Background:	Full Gene Name: cardiotrophin-like cytokine factor 1 Synonyms: BSF3,CISS2,CLC,NNT1,NR6
Gene ID:	23529
Pathways:	Regulation of Leukocyte Mediated Immunity , Positive Regulation of Immune Effector Process , Production of Molecular Mediator of Immune Response

Application Details

Application Notes:	Optimal working dilution should be determined by the investigator.
Comment:	Preparation method: in vitro, wheat germ expression system Product Quality tested by: 12.5% SDS-PAGE Stained with Coomassie Blue.
Restrictions:	For Research Use only

Handling

Buffer:	50 mM Tris-HCl, 10 mM reduced Glutathione, pH =8.0 in the elution buffer.
Handling Advice:	Aliquot to avoid repeated freezing and thawing.
Storage:	-80 °C
Storage Comment:	Best use within three months from the date of receipt of this protein.

Images

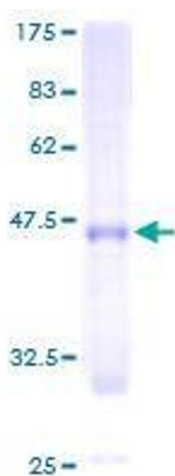


Image 1.