

Datasheet for ABIN1349566
CLCN2 Protein (AA 1-387) (GST tag)



[Go to Product page](#)

1 Image

Overview

Quantity:	10 µg
Target:	CLCN2
Protein Characteristics:	AA 1-387
Origin:	Human
Source:	Wheat germ
Protein Type:	Recombinant
Purification tag / Conjugate:	This CLCN2 protein is labelled with GST tag.
Application:	ELISA, Western Blotting (WB), Antibody Array (AA), Affinity Purification (AP)

Product Details

Purpose:	CLCN2 (Human) Recombinant Protein (P02)
Sequence:	MAAWFPDGIH TDSSTYRIVP GGYAVVGAAA LAGAVTHTVS TAVIVFELTG QIAHILPVMIVVILANAQAQ SLQPSLYDSI IRIKKLPYLP ELGWGRHQY RVRVEDIMVR DVPHVALSCTFRDLRLALHR TKGRMLALVE SPESMILLGS IERSQVWALL GAQLSPARRR QHMQERRATQTSPLSDQEGP PTPEASVCFQ VNTEDSAFPA ARGETHKPLK PALKRGPSVT RNLGESPTGSAESAGIALRS LFCGSPPEA ASEKLESCEK RKLKRVRI SL ASDADLEGEM SPEETHTIFSLLGVDHAYVT SIGRLIGIVT LKELRKAIEG SVTAQGVKVR PPLASFRDSA TSSSDTETTEVHALWGPHSR HGLPREGSPS DSDDKCCQ
Characteristics:	Human CLCN2 full-length ORF (AAH21578.1, 1 a.a. - 387 a.a.) recombinant protein with GST-tag at N-terminal.
Purification:	in vitro wheat germ expression system

Target Details

Target:	CLCN2
Alternative Name:	CLCN2 (CLCN2 Products)
Background:	Full Gene Name: chloride channel 2 Synonyms: CIC-2,CLC2,ECA3,EGI3,EGMA
Gene ID:	1181

Application Details

Application Notes:	Optimal working dilution should be determined by the investigator.
Comment:	Preparation method: in vitro, wheat germ expression system Product Quality tested by: 12.5% SDS-PAGE Stained with Coomassie Blue.
Restrictions:	For Research Use only

Handling

Buffer:	50 mM Tris-HCl, 10 mM reduced Glutathione, pH =8.0 in the elution buffer.
Handling Advice:	Aliquot to avoid repeated freezing and thawing.
Storage:	-80 °C
Storage Comment:	Best use within three months from the date of receipt of this protein.

Images

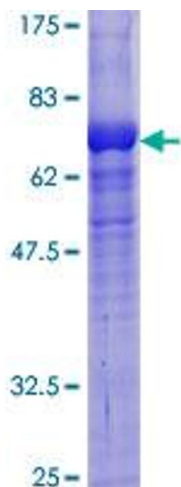


Image 1.