



[Go to Product page](#)

Datasheet for ABIN1349579

## CLCNKB Protein (AA 516-615) (GST tag)

### 1 Image

#### Overview

Quantity:	10 µg
Target:	CLCNKB
Protein Characteristics:	AA 516-615
Origin:	Human
Source:	Wheat germ
Protein Type:	Recombinant
Purification tag / Conjugate:	This CLCNKB protein is labelled with GST tag.
Application:	ELISA, Western Blotting (WB), Antibody Array (AA), Affinity Purification (AP)

#### Product Details

Purpose:	CLCNKB (Human) Recombinant Protein (Q01)
Sequence:	QPSFYDGTVI VKKLPYLPRI LGRNIGSHRV RVEHFMNHSI TTLAKDTPLE EVVKVVTSTD VAEYPLVEST ESQILVGIVR RAQLVQALKA EPPSWAPGHQ
Characteristics:	Human CLCNKB partial ORF ( NP_000076.1, 516 a.a. - 615 a.a.) recombinant protein with GST-tag at N-terminal.
Purification:	in vitro wheat germ expression system

#### Target Details

Target:	CLCNKB
Alternative Name:	CLCNKB ( <a href="#">CLCNKB Products</a> )

## Target Details

Background:	Full Gene Name: chloride channel Kb Synonyms: CLCKB,CIC-K2,MGC24087,hCIC-Kb
Gene ID:	1188
NCBI Accession:	<a href="#">NM_000085</a>

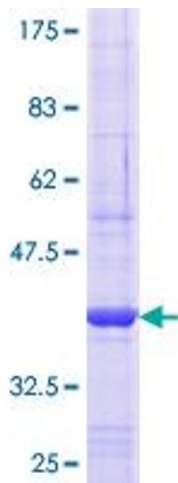
## Application Details

Application Notes:	Optimal working dilution should be determined by the investigator.
Comment:	Preparation method: in vitro, wheat germ expression system Product Quality tested by: 12.5% SDS-PAGE Stained with Coomassie Blue.
Restrictions:	For Research Use only

## Handling

Buffer:	50 mM Tris-HCl, 10 mM reduced Glutathione, pH =8.0 in the elution buffer.
Handling Advice:	Aliquot to avoid repeated freezing and thawing.
Storage:	-80 °C
Storage Comment:	Best use within three months from the date of receipt of this protein.

## Images



**Image 1.**