



[Go to Product page](#)

Datasheet for ABIN1349591

CLDN14 Protein (AA 1-239) (GST tag)

1 Image

Overview

Quantity:	10 µg
Target:	CLDN14
Protein Characteristics:	AA 1-239
Origin:	Human
Source:	Wheat germ
Protein Type:	Recombinant
Purification tag / Conjugate:	This CLDN14 protein is labelled with GST tag.
Application:	ELISA, Western Blotting (WB), Antibody Array (AA), Affinity Purification (AP)

Product Details

Purpose:	CLDN14 (Human) Recombinant Protein (P01)
Sequence:	MASTAVQLLG FLLSFLGMVG TLITTILPHW RRTAHVGTNI LTAVSYLKGL WMECVWHSTG IYQCQIYRSL LALPQDLQAA RALMVISCLL SGIACACAVI GMKCTRCAKG TPAKTTFAIL GGTLFILAGL LCMVAVSWTT NDVVQNFYNP LLPSGMKFEI GQALYLG FIS SLSLIGGTL LCLSCQDEAP YRPYQAPPRA TTTTANTAPA YQPPAAYKDN RAPSVT SATH SGYRLNDYV
Characteristics:	Human CLDN14 full-length ORF (NP_036262.1, 1 a.a. - 239 a.a.) recombinant protein with GST-tag at N-terminal.
Purification:	in vitro wheat germ expression system

Target Details

Target:	CLDN14
---------	--------

Target Details

Alternative Name:	CLDN14 (CLDN14 Products)
Background:	Full Gene Name: claudin 14 Synonyms: DFNB29
Gene ID:	23562
NCBI Accession:	NM_012130
Pathways:	Cell-Cell Junction Organization , Hepatitis C

Application Details

Application Notes:	Optimal working dilution should be determined by the investigator.
Comment:	Preparation method: in vitro, wheat germ expression system Product Quality tested by: 12.5% SDS-PAGE Stained with Coomassie Blue.
Restrictions:	For Research Use only

Handling

Buffer:	50 mM Tris-HCl, 10 mM reduced Glutathione, pH =8.0 in the elution buffer.
Handling Advice:	Aliquot to avoid repeated freezing and thawing.
Storage:	-80 °C
Storage Comment:	Best use within three months from the date of receipt of this protein.

Images

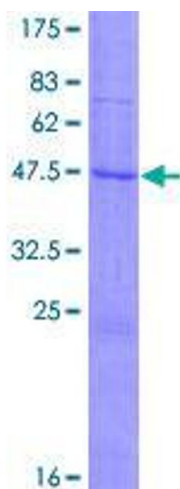


Image 1.