

Datasheet for ABIN1349611

## Claudin 20 Protein (CLDN20) (AA 1-219) (GST tag)



[Go to Product page](#)

### 1 Image

#### Overview

Quantity:	10 µg
Target:	Claudin 20 (CLDN20)
Protein Characteristics:	AA 1-219
Origin:	Human
Source:	Wheat germ
Protein Type:	Recombinant
Purification tag / Conjugate:	This Claudin 20 protein is labelled with GST tag.
Application:	ELISA, Western Blotting (WB), Antibody Array (AA), Affinity Purification (AP)

#### Product Details

Purpose:	CLDN20 (Human) Recombinant Protein (P01)
Sequence:	MASAGLQLLA FILALSGVSG VLTATLLPNW KVNVDVDSNI ITAIVQLHGL WMDCTWYSTG MFSCALKHSI LSLPIHVQAA RATMVLACVL SALGICTSTV GMKCTRLGGD RETKSHASFA GGVCFMSAGI SSLISTVWYT KEIIANFLDL TVPESNKHEP GGAIYIGFIS AMLLFISGMI FCTSCIKRNP EARLDPPTQQ PISNTQLENN STHNLKDYV
Characteristics:	Human CLDN20 full-length ORF ( AAH20838, 1 a.a. - 219 a.a.) recombinant protein with GST-tag at N-terminal.
Purification:	in vitro wheat germ expression system

#### Target Details

Target:	Claudin 20 (CLDN20)
---------	---------------------

## Target Details

Alternative Name:	CLDN20 ( <a href="#">CLDN20 Products</a> )
Background:	Full Gene Name: claudin 20 Synonyms:
Gene ID:	49861
Pathways:	<a href="#">Cell-Cell Junction Organization</a> , <a href="#">Hepatitis C</a>

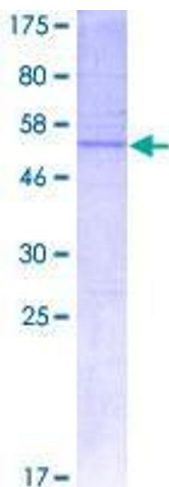
## Application Details

Application Notes:	Optimal working dilution should be determined by the investigator.
Comment:	Preparation method: in vitro, wheat germ expression system Product Quality tested by: 12.5% SDS-PAGE Stained with Coomassie Blue.
Restrictions:	For Research Use only

## Handling

Buffer:	50 mM Tris-HCl, 10 mM reduced Glutathione, pH =8.0 in the elution buffer.
Handling Advice:	Aliquot to avoid repeated freezing and thawing.
Storage:	-80 °C
Storage Comment:	Best use within three months from the date of receipt of this protein.

## Images



**Image 1.**