



[Go to Product page](#)

Datasheet for ABIN1349628

CLDN8 Protein (AA 1-225) (GST tag)

1 Image

Overview

Quantity:	2 µg
Target:	CLDN8
Protein Characteristics:	AA 1-225
Origin:	Human
Source:	Wheat germ
Protein Type:	Recombinant
Purification tag / Conjugate:	This CLDN8 protein is labelled with GST tag.
Application:	ELISA, Western Blotting (WB), Antibody Array (AA), Affinity Purification (AP)

Product Details

Purpose:	CLDN8 (Human) Recombinant Protein (P01)
Sequence:	MATHALEIAG LFLGGVGMVG TVAVTVMPQW RVSAFIENNI VVFENFWEGL WMNCVRQANI RMQCKIYDSL LALSPDLQAA RGLMCAASVM SFLAFMMAIL GMKCTRCTGD NEKVKAHILL TAGIIFIITG MVLIPVSWV ANAIIRDFYN SIVNVAQKRE LGEALYLGWT TALVLIVGGA LFCCVFCCNE KSSSYRYSIP SHRTTQKSYH TGKKSPSVYS RSQYV
Characteristics:	Human CLDN8 full-length ORF (NP_955360.1, 1 a.a. - 225 a.a.) recombinant protein with GST-tag at N-terminal.
Purification:	in vitro wheat germ expression system

Target Details

Target:	CLDN8
---------	-------

Target Details

Alternative Name: CLDN8 ([CLDN8 Products](#))

Background: Full Gene Name: claudin 8
Synonyms:

Gene ID: 9073

NCBI Accession: [NM_199328](#)

Pathways: [Hepatitis C](#)

Application Details

Application Notes: Optimal working dilution should be determined by the investigator.

Comment: Preparation method: in vitro, wheat germ expression system
Product Quality tested by: 12.5% SDS-PAGE Stained with Coomassie Blue.

Restrictions: For Research Use only

Handling

Buffer: 50 mM Tris-HCl, 10 mM reduced Glutathione, pH =8.0 in the elution buffer.

Handling Advice: Aliquot to avoid repeated freezing and thawing.

Storage: -80 °C

Storage Comment: Best use within three months from the date of receipt of this protein.

Images

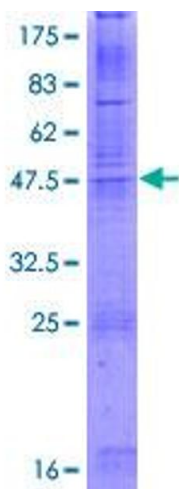


Image 1.