



[Go to Product page](#)

Datasheet for ABIN1349668

CLEC7A Protein (AA 1-77) (GST tag)

1 Image

Overview

Quantity:	10 µg
Target:	CLEC7A
Protein Characteristics:	AA 1-77
Origin:	Human
Source:	Wheat germ
Protein Type:	Recombinant
Purification tag / Conjugate:	This CLEC7A protein is labelled with GST tag.
Application:	Western Blotting (WB), ELISA, Antibody Array (AA), Affinity Purification (AP)

Product Details

Purpose:	CLEC7A (Human) Recombinant Protein (P01)
Sequence:	MEYHPDLENL DEDGYTQLHF DSQSNTRIAV VSEKGS CAAS PPWRLIAVIL GILCLVILVI AVVLGTMAGF KAVEFKG
Characteristics:	Human CLEC7A full-length ORF (AAH13385, 1 a.a. - 77 a.a.) recombinant protein with GST-tag at N-terminal.
Purification:	in vitro wheat germ expression system

Target Details

Target:	CLEC7A
Alternative Name:	CLEC7A (CLEC7A Products)

Target Details

Background:	Full Gene Name: C-type lectin domain family 7, member A Synonyms: BGR,CLECSF12,DECTIN1
Gene ID:	64581
Pathways:	Activation of Innate immune Response

Application Details

Application Notes:	Optimal working dilution should be determined by the investigator.
Comment:	Preparation method: in vitro, wheat germ expression system Product Quality tested by: 12.5% SDS-PAGE Stained with Coomassie Blue.
Restrictions:	For Research Use only

Handling

Buffer:	50 mM Tris-HCl, 10 mM reduced Glutathione, pH =8.0 in the elution buffer.
Handling Advice:	Aliquot to avoid repeated freezing and thawing.
Storage:	-80 °C
Storage Comment:	Best use within three months from the date of receipt of this protein.

Images

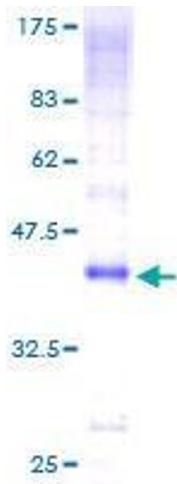


Image 1.