



[Go to Product page](#)

Datasheet for ABIN1349690

CLINT1 Protein (AA 161-261) (GST tag)

1 Image

Overview

Quantity:	10 µg
Target:	CLINT1
Protein Characteristics:	AA 161-261
Origin:	Human
Source:	Wheat germ
Protein Type:	Recombinant
Purification tag / Conjugate:	This CLINT1 protein is labelled with GST tag.
Application:	ELISA, Western Blotting (WB), Antibody Array (AA), Affinity Purification (AP)

Product Details

Purpose:	ENTH (Human) Recombinant Protein (Q01)
Sequence:	GVSSDSVGGF RYSERYDPEP KSKWDEEWDK NKSAFPFSDK LGELSDKIGS TIDDTISKFR RKDREDSPER CSDSDEEKKA RRGSPKGEF KDEEETVTTK H
Characteristics:	Human ENTH partial ORF (NP_055481.1, 161 a.a. - 261 a.a.) recombinant protein with GST-tag at N-terminal.
Purification:	in vitro wheat germ expression system

Target Details

Target:	CLINT1
Alternative Name:	CLINT1 (CLINT1 Products)

Target Details

Background:	Full Gene Name: clathrin interactor 1 Synonyms: CLINT,ENTH,EPN4,EPNR,EPSINR,FLJ46753,KIAA0171
Gene ID:	9685
NCBI Accession:	NM_014666

Application Details

Application Notes:	Optimal working dilution should be determined by the investigator.
Comment:	Preparation method: in vitro, wheat germ expression system Product Quality tested by: 12.5% SDS-PAGE Stained with Coomassie Blue.
Restrictions:	For Research Use only

Handling

Buffer:	50 mM Tris-HCl, 10 mM reduced Glutathione, pH =8.0 in the elution buffer.
Handling Advice:	Aliquot to avoid repeated freezing and thawing.
Storage:	-80 °C
Storage Comment:	Best use within three months from the date of receipt of this protein.

Images

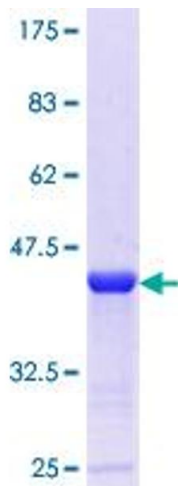


Image 1.