

Datasheet for ABIN1349700  
**CLK1 Protein (AA 1-484) (GST tag)**



[Go to Product page](#)

1 Image

Overview

Quantity:	10 µg
Target:	CLK1
Protein Characteristics:	AA 1-484
Origin:	Human
Source:	Wheat germ
Protein Type:	Recombinant
Purification tag / Conjugate:	This CLK1 protein is labelled with GST tag.
Application:	ELISA, Western Blotting (WB), Antibody Array (AA), Affinity Purification (AP)

Product Details

Purpose:	CLK1 (Human) Recombinant Protein (P02)
Sequence:	MRHSKRTYCP DWDDKDWDYG KWRSSSSHKR RKRSHSSAQE NKRCKYNHSK MCDSHYLESR SINEKDYHSR RYIDEYRNDY TQGCEPGRHQ RDHESRYQNH SSKSSGRSGR SSYKSKHRIH HSTSHRRSHG KSHRRKRTRS VEDDEEGHLI CQSGDVLSAR YEIVDTLGEF AFGKVVECID HKAGGRHVAV KIVKNVDRYC EAARSEIQVL EHLNTTDPNS TFRCVQMLEW FEHHGHICIV FELLGLSTYD FIKENGFLPF RLDHIRKMAY QICKSVNFLH SNKLTHTDLK PENILFVQSD YTEAYNPKIK RDERTLINPD IKVVDVFGSAT YDDEHHSTLV STRHYRAPEV ILALGWSQPC DVWSIGCILI EYLGFTVFP THDSKEHLAM MERILGPLPK HMIQKTRKRK YFHHDRLDWD EHSSAGRYVS RRCKPLKEFM LSQDVEHERL FDLIQMLEY DPAKRITLRE ALKHPFFDLL KKSI
Characteristics:	Human CLK1 full-length ORF ( NP_004062.2, 1 a.a. - 484 a.a.) recombinant protein with GST-tag at N-terminal.

## Product Details

---

Purification: in vitro wheat germ expression system

## Target Details

---

Target: CLK1

Alternative Name: CLK1 ([CLK1 Products](#))

Background: Full Gene Name: CDC-like kinase 1  
Synonyms: CLK,CLK/STY,STY

Gene ID: 1195

NCBI Accession: [NM\\_004071](#)

## Application Details

---

Application Notes: Optimal working dilution should be determined by the investigator.

Comment: Preparation method: in vitro, wheat germ expression system  
Product Quality tested by: 12.5% SDS-PAGE Stained with Coomassie Blue.

Restrictions: For Research Use only

## Handling

---

Buffer: 50 mM Tris-HCl, 10 mM reduced Glutathione, pH =8.0 in the elution buffer.

Handling Advice: Aliquot to avoid repeated freezing and thawing.

Storage: -80 °C

Storage Comment: Best use within three months from the date of receipt of this protein.

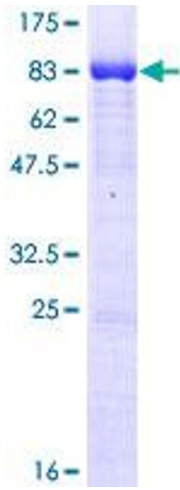


Image 1.