

Datasheet for ABIN1349717
CLLU10S Protein (AA 1-101) (GST tag)



[Go to Product page](#)

1 Image

Overview

Quantity:	10 µg
Target:	CLLU10S
Protein Characteristics:	AA 1-101
Origin:	Human
Source:	Wheat germ
Protein Type:	Recombinant
Purification tag / Conjugate:	This CLLU10S protein is labelled with GST tag.
Application:	ELISA, Western Blotting (WB), Antibody Array (AA), Affinity Purification (AP)

Product Details

Purpose:	CLLU10S (Human) Recombinant Protein (P01)
Sequence:	MNKLGHNELK ECLKTATDSL QTVQPSISQT CTSYGPALGA PLPGRNEVAL LTSLPPNYEI SEGKPRAISA YVRAGKGNVT RRRKKTHLGN DDGKKEAQEK M
Characteristics:	Human CLLU10S full-length ORF (AAI53087.1, 1 a.a. - 101 a.a.) recombinant protein with GST-tag at N-terminal.
Purification:	in vitro wheat germ expression system

Target Details

Target:	CLLU10S
Alternative Name:	CLLU10S (CLLU10S Products)

Target Details

Background:	Full Gene Name: chronic lymphocytic leukemia up-regulated 1 opposite strand Synonyms:
Gene ID:	574016

Application Details

Application Notes:	Optimal working dilution should be determined by the investigator.
Comment:	Preparation method: in vitro, wheat germ expression system Product Quality tested by: 12.5% SDS-PAGE Stained with Coomassie Blue.
Restrictions:	For Research Use only

Handling

Buffer:	50 mM Tris-HCl, 10 mM reduced Glutathione, pH =8.0 in the elution buffer.
Handling Advice:	Aliquot to avoid repeated freezing and thawing.
Storage:	-80 °C
Storage Comment:	Best use within three months from the date of receipt of this protein.

Images

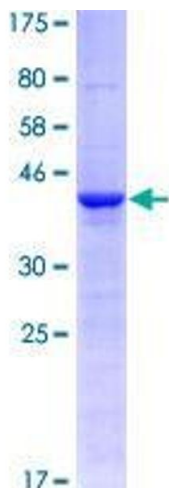


Image 1.