



[Go to Product page](#)

Datasheet for ABIN1349729

CLP1 Protein (AA 1-425) (GST tag)

1 Image

Overview

Quantity:	10 µg
Target:	CLP1
Protein Characteristics:	AA 1-425
Origin:	Human
Source:	Wheat germ
Protein Type:	Recombinant
Purification tag / Conjugate:	This CLP1 protein is labelled with GST tag.
Application:	ELISA, Western Blotting (WB), Antibody Array (AA), Affinity Purification (AP)

Product Details

Purpose:	HEAB (Human) Recombinant Protein (P01)
Sequence:	<p>MGEEANDDKK PTTKFELERE TELRFEVEAS QSVQLELLTG MAEIFGTELT RNKKFTFDAG AKVAVFTWHG CSVQLSGRTE VAYVSKDTPM LLYLNTHTAL EQMRRQAEKE EERGPRVMVV GPTDVGKSTV CRLLLNYAVR LGRRPTYVEL DVGQGSVSIP GTMGALYIER PADVEEGFSI QAPLVYHFGS TTPGTNIKLY NKITSRLADV FNQRCEVNR ASVSGCVINT CGWVKGSGYQ ALVHAASAFE VDVVVVLDQE RLYNELKRDL PHFVRTVLLP KSGGVVERSK DFRRECRDER IREYFYGFRG CFYPHAFNVK FSDVKIYKVG APTIPDSCLP LGMSQEDNQL KLVPTVTPGRD MVHLLSVST AEGTEENLSE TSVAGFIVVT SVDLEHQVFT VLSPAPRPLP KNFLLIMDIR FMDLK</p>
Characteristics:	Human HEAB full-length ORF (NP_006822.1, 1 a.a. - 425 a.a.) recombinant protein with GST-tag at N-terminal.
Purification:	in vitro wheat germ expression system

Target Details

Target:	CLP1
Alternative Name:	CLP1 (CLP1 Products)
Background:	Full Gene Name: CLP1, cleavage and polyadenylation factor I subunit, homolog (<i>S. cerevisiae</i>) Synonyms: HEAB,hClp1
Gene ID:	10978
NCBI Accession:	NM_006831
Pathways:	Ribonucleoprotein Complex Subunit Organization

Application Details

Application Notes:	Optimal working dilution should be determined by the investigator.
Comment:	Preparation method: in vitro, wheat germ expression system Product Quality tested by: 12.5% SDS-PAGE Stained with Coomassie Blue.
Restrictions:	For Research Use only

Handling

Buffer:	50 mM Tris-HCl, 10 mM reduced Glutathione, pH =8.0 in the elution buffer.
Handling Advice:	Aliquot to avoid repeated freezing and thawing.
Storage:	-80 °C
Storage Comment:	Best use within three months from the date of receipt of this protein.

Images

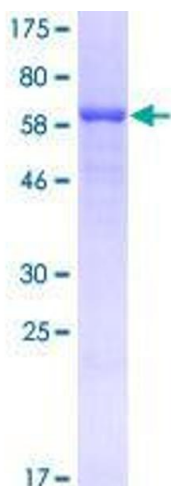


Image 1.