



[Go to Product page](#)

Datasheet for ABIN1349731

CLP1 Protein (AA 316-425) (GST tag)

1 Image

Overview

Quantity:	10 µg
Target:	CLP1
Protein Characteristics:	AA 316-425
Origin:	Human
Source:	Wheat germ
Protein Type:	Recombinant
Purification tag / Conjugate:	This CLP1 protein is labelled with GST tag.
Application:	ELISA, Western Blotting (WB), Antibody Array (AA), Affinity Purification (AP)

Product Details

Purpose:	HEAB (Human) Recombinant Protein (Q01)
Sequence:	AFNVKFSQDK IYKVGAPTIP DSCLPLGMSQ EDNQLKLVVPV TPGRDMVHHL LSVSTAEGTE ENLSETSVAG FIVVTSVDLE HQVFTVLSPA PRPLPKNFLL IMDIRFMDLK
Characteristics:	Human HEAB partial ORF (NP_006822, 316 a.a. - 425 a.a.) recombinant protein with GST-tag at N-terminal.
Purification:	in vitro wheat germ expression system

Target Details

Target:	CLP1
Alternative Name:	CLP1 (CLP1 Products)

Target Details

Background:	Full Gene Name: CLP1, cleavage and polyadenylation factor I subunit, homolog (<i>S. cerevisiae</i>) Synonyms: HEAB,hClp1
Gene ID:	10978
NCBI Accession:	NM_006831
Pathways:	Ribonucleoprotein Complex Subunit Organization

Application Details

Application Notes:	Optimal working dilution should be determined by the investigator.
Comment:	Preparation method: in vitro, wheat germ expression system Product Quality tested by: 12.5% SDS-PAGE Stained with Coomassie Blue.
Restrictions:	For Research Use only

Handling

Buffer:	50 mM Tris-HCl, 10 mM reduced Glutathione, pH =8.0 in the elution buffer.
Handling Advice:	Aliquot to avoid repeated freezing and thawing.
Storage:	-80 °C
Storage Comment:	Best use within three months from the date of receipt of this protein.

Images

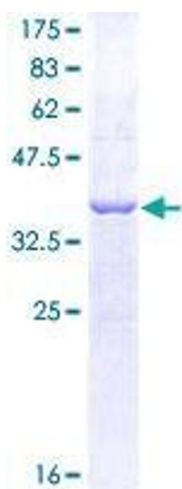


Image 1.