

Datasheet for ABIN1349734  
**CLPP Protein (AA 1-277) (GST tag)**



[Go to Product page](#)

1 Image

Overview

Quantity:	10 µg
Target:	CLPP
Protein Characteristics:	AA 1-277
Origin:	Human
Source:	Wheat germ
Protein Type:	Recombinant
Purification tag / Conjugate:	This CLPP protein is labelled with GST tag.
Application:	ELISA, Western Blotting (WB), Antibody Array (AA), Affinity Purification (AP)

Product Details

Purpose:	CLPP (Human) Recombinant Protein (P01)
Sequence:	MWPGILVGGA RVASCYPAL GPRLAAHFPA QRPPQRTLQN GLALQRCLHA TATRALPLIP IVVEQTGRGE RAYDIYSRLL RERIVCVMGP IDDSVASLVI AQLLFLQSES NKKPIHMYIN SPGGVVTAGL AIYDTMQYIL NPICTWCVGQ AASMGSLLLA AGTPGMRHSL PNSRIMIHQP SGGARGQATD IAIQAEIIMK LKKQLYNIYA KHTKQSLQVI ESAMERDRYM SPMEAQEFGI LDKVLVHPPQ DGEDEPTLVQ KEPVEAAPAA EPVPAST
Characteristics:	Human CLPP full-length ORF ( NP_006003.1, 1 a.a. - 277 a.a.) recombinant protein with GST-tag at N-terminal.
Purification:	in vitro wheat germ expression system

## Target Details

Target:	CLPP
Alternative Name:	CLPP ( <a href="#">CLPP Products</a> )
Background:	Full Gene Name: ClpP caseinolytic peptidase, ATP-dependent, proteolytic subunit homolog (E. coli) Synonyms:
Gene ID:	8192
NCBI Accession:	<a href="#">NM_006012</a>

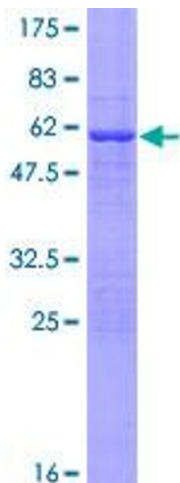
## Application Details

Application Notes:	Optimal working dilution should be determined by the investigator.
Comment:	Preparation method: in vitro, wheat germ expression system Product Quality tested by: 12.5% SDS-PAGE Stained with Coomassie Blue.
Restrictions:	For Research Use only

## Handling

Buffer:	50 mM Tris-HCl, 10 mM reduced Glutathione, pH =8.0 in the elution buffer.
Handling Advice:	Aliquot to avoid repeated freezing and thawing.
Storage:	-80 °C
Storage Comment:	Best use within three months from the date of receipt of this protein.

## Images



**Image 1.**