

Datasheet for ABIN1349769

## Cmah Protein (AA 385-485) (GST tag)



[Go to Product page](#)

### 1 Image

#### Overview

Quantity:	10 µg
Target:	Cmah (CMAHP)
Protein Characteristics:	AA 385-485
Origin:	Human
Source:	Wheat germ
Protein Type:	Recombinant
Purification tag / Conjugate:	This Cmah protein is labelled with GST tag.
Application:	ELISA, Western Blotting (WB), Antibody Array (AA), Affinity Purification (AP)

#### Product Details

Purpose:	CMAH (Human) Recombinant Protein (Q01)
Sequence:	GYDYLVDFLD LSFPKERPQR EHPYEEIHSR VDVI RHVVKN GLLWDELYIG FQTRLQRDPD IYHHLFWNHF QIKLPLTPPN WKSFLMCCEQ NGPAILQECK T
Characteristics:	Human CMAH partial ORF ( BAA31160, 385 a.a. - 485 a.a.) recombinant protein with GST-tag at N-terminal.
Purification:	in vitro wheat germ expression system

#### Target Details

Target:	Cmah (CMAHP)
Alternative Name:	CMAH ( <a href="#">CMAHP Products</a> )

## Target Details

Background: Full Gene Name: cytidine monophosphate-N-acetylneuraminic acid hydroxylase (CMP-N-acetylneuraminate monooxygenase) pseudogene  
Synonyms: CMAHP,CSAH

Gene ID: 8418

## Application Details

Application Notes: Optimal working dilution should be determined by the investigator.

Comment: Preparation method: in vitro, wheat germ expression system  
Product Quality tested by: 12.5% SDS-PAGE Stained with Coomassie Blue.

Restrictions: For Research Use only

## Handling

Buffer: 50 mM Tris-HCl, 10 mM reduced Glutathione, pH =8.0 in the elution buffer.

Handling Advice: Aliquot to avoid repeated freezing and thawing.

Storage: -80 °C

Storage Comment: Best use within three months from the date of receipt of this protein.

## Images

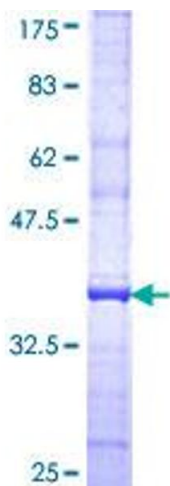


Image 1.