



[Go to Product page](#)

Datasheet for ABIN1349893

CNTLN Protein (AA 971-1070) (GST tag)

1 Image

Overview

Quantity:	10 µg
Target:	CNTLN
Protein Characteristics:	AA 971-1070
Origin:	Human
Source:	Wheat germ
Protein Type:	Recombinant
Purification tag / Conjugate:	This CNTLN protein is labelled with GST tag.
Application:	ELISA, Western Blotting (WB), Antibody Array (AA), Affinity Purification (AP)

Product Details

Purpose:	C9orf39 (Human) Recombinant Protein (Q01)
Sequence:	QNDVHVRRQ IRELKMKKN RDACKTSTHK AQTAAASILN ISRSDLEEIL DTEDQVEIEK TKIDAENDKE WMLYIQKLE GQSLALSPRL KCNGAIMAHQ
Characteristics:	Human C9orf39 partial ORF (NP_060208, 971 a.a. - 1070 a.a.) recombinant protein with GST-tag at N-terminal.
Purification:	in vitro wheat germ expression system

Target Details

Target:	CNTLN
Alternative Name:	CNTLN (CNTLN Products)

Target Details

Background:	Full Gene Name: centlein, centrosomal protein Synonyms: C9orf101,C9orf39,FLJ20276,FLJ25636,RP11-340N12.1,bA340N12.1
Gene ID:	54875
NCBI Accession:	NM_017738

Application Details

Application Notes:	Optimal working dilution should be determined by the investigator.
Comment:	Preparation method: in vitro, wheat germ expression system Product Quality tested by: 12.5% SDS-PAGE Stained with Coomassie Blue.
Restrictions:	For Research Use only

Handling

Buffer:	50 mM Tris-HCl, 10 mM reduced Glutathione, pH =8.0 in the elution buffer.
Handling Advice:	Aliquot to avoid repeated freezing and thawing.
Storage:	-80 °C
Storage Comment:	Best use within three months from the date of receipt of this protein.

Images

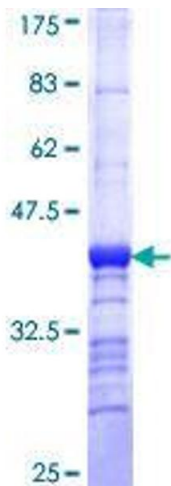


Image 1.