



Datasheet for ABIN1349913  
**COCH Protein (AA 1-494) (GST tag)**



[Go to Product page](#)

1 Image

Overview

Quantity:	25 µg
Target:	COCH
Protein Characteristics:	AA 1-494
Origin:	Human
Source:	Wheat germ
Protein Type:	Recombinant
Purification tag / Conjugate:	This COCH protein is labelled with GST tag.
Application:	ELISA, Western Blotting (WB), Antibody Array (AA), Affinity Purification (AP)

Product Details

Purpose:	COCH (Human) Recombinant Protein (P01)
Sequence:	MSAAWIPALG LGVCLLLLPG PAGSEGA API AITCFTRGLD IRKEKADVLC PGGCPLEEFSS VYGNIVYASV SSICGAAVHR GVISNSGGPV RVYSLPGREN YSSVDANGIQ SQMLSRWSAS FTVTKGKSST QEATGQAVST AHPPTGKRLK KTPEKKTGNK DCKADIAFLI DGSFNIGQRR FNLQKNFVGK VALMLGIGTE GPHVGLVQAS EHPKIEFYLK NFTSAKDVLF AIKEVGFRRGG NSNTGKALKH TAQKFFTVDA GVRKGIPKVV VVFIDGWPSD DIEEAGIVAR EFGVNVFIVS VAKPIPEELG MVQDVTFVDK AVCRNNGFFS YHMPNWFMTT KYVKPLVQKL CTHEQMMCSK TCYNSVNIAF LIDGSSSVGD SNFRLMLEFV SNIKTFEIS DIGAKIAAVQ FTYDQRTEFS FTDYSTKENV LAVIRNIRYM SGGTATGDAI SFTVRNVFGP IRESPNKNFL VIVTDGQSYD DVQGPAAAAH DAAK
Characteristics:	Human COCH full-length ORF ( AAH07230.1, 1 a.a. - 494 a.a.) recombinant protein with GST-tag at N-terminal.

## Product Details

---

Purification: in vitro wheat germ expression system

## Target Details

---

Target: COCH

Alternative Name: COCH ([COCH Products](#))

Background: Full Gene Name: coagulation factor C homolog, cochlin (Limulus polyphemus)  
Synonyms: COCH-5B2,COCH5B2,DFNA9

Gene ID: 1690

Pathways: [Sensory Perception of Sound](#)

## Application Details

---

Application Notes: Optimal working dilution should be determined by the investigator.

Comment: Preparation method: in vitro, wheat germ expression system  
Product Quality tested by: 12.5% SDS-PAGE Stained with Coomassie Blue.

Restrictions: For Research Use only

## Handling

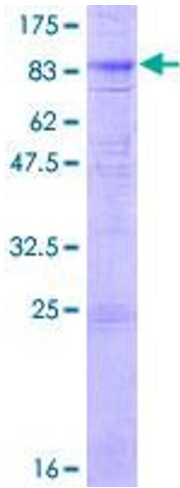
---

Buffer: 50 mM Tris-HCl, 10 mM reduced Glutathione, pH =8.0 in the elution buffer.

Handling Advice: Aliquot to avoid repeated freezing and thawing.

Storage: -80 °C

Storage Comment: Best use within three months from the date of receipt of this protein.



**Image 1.**