

Datasheet for ABIN1349917
COG2 Protein (AA 639-738) (GST tag)



[Go to Product page](#)

1 Image

Overview

Quantity:	10 µg
Target:	COG2
Protein Characteristics:	AA 639-738
Origin:	Human
Source:	Wheat germ
Protein Type:	Recombinant
Purification tag / Conjugate:	This COG2 protein is labelled with GST tag.
Application:	ELISA, Western Blotting (WB), Antibody Array (AA), Affinity Purification (AP)

Product Details

Purpose:	COG2 (Human) Recombinant Protein (Q01)
Sequence:	LSESTHKYEE TVSDVLNSVK KMEESLKRLK QARKTTPANP VGPSGGMSDD DKIRLQLALD VEYLGEQIQK LGLQASDIKS FSALAEVAA AKDQATAEQP
Characteristics:	Human COG2 partial ORF (NP_031383, 639 a.a. - 738 a.a.) recombinant protein with GST-tag at N-terminal.
Purification:	in vitro wheat germ expression system

Target Details

Target:	COG2
Alternative Name:	COG2 (COG2 Products)

Target Details

Background:	Gene: component of oligomeric golgi complex 2 Synonyms: LDLC
Gene ID:	22796
NCBI Accession:	NM_007357

Application Details

Application Notes:	Optimal working dilution should be determined by the investigator.
Restrictions:	For Research Use only

Handling

Buffer:	50 mM Tris-HCl, 10 mM reduced Glutathione, pH =8.0 in the elution buffer.
Handling Advice:	Aliquot to avoid repeated freezing and thawing.
Storage:	-80 °C
Storage Comment:	Best use within three months from the date of receipt of this protein.

Images

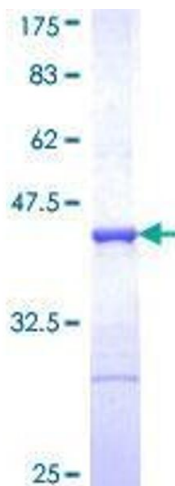


Image 1.