



Datasheet for ABIN1349936

## COL11A2 Protein (AA 29-128) (GST tag)



[Go to Product page](#)

### 1 Image

#### Overview

Quantity:	10 µg
Target:	COL11A2
Protein Characteristics:	AA 29-128
Origin:	Human
Source:	Wheat germ
Protein Type:	Recombinant
Purification tag / Conjugate:	This COL11A2 protein is labelled with GST tag.
Application:	Western Blotting (WB), Antibody Array (AA), Affinity Purification (AP), ELISA

#### Product Details

Purpose:	COL11A2 (Human) Recombinant Protein (Q01)
Sequence:	APPVDVLRAL RFPSLPDGVR RAKGICPADV AYRVARPAQL SAPTRQLFPG GFPKDFSLLT VVRTRPGLQA PLLTLYSAQG VRQLGLELGR PVRFLYEDQT
Characteristics:	Human COL11A2 partial ORF ( NP_542411, 29 a.a. - 128 a.a.) recombinant protein with GST-tag at N-terminal.
Purification:	in vitro wheat germ expression system

#### Target Details

Target:	COL11A2
Alternative Name:	COL11A2 ( <a href="#">COL11A2 Products</a> )

## Target Details

Background: Full Gene Name: collagen, type XI, alpha 2  
Synonyms: DFNA13,DFNB53,HKE5,PARP,STL3

Gene ID: 1302

NCBI Accession: [NM\\_080680](#)

Pathways: [RTK Signaling](#), [Sensory Perception of Sound](#), [Chromatin Binding](#)

## Application Details

Application Notes: Optimal working dilution should be determined by the investigator.

Comment: Preparation method: in vitro, wheat germ expression system  
Product Quality tested by: 12.5% SDS-PAGE Stained with Coomassie Blue.

Restrictions: For Research Use only

## Handling

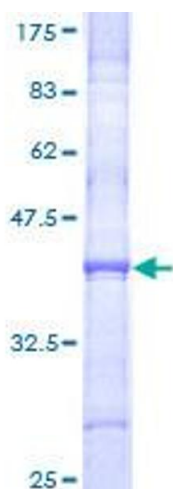
Buffer: 50 mM Tris-HCl, 10 mM reduced Glutathione, pH =8.0 in the elution buffer.

Handling Advice: Aliquot to avoid repeated freezing and thawing.

Storage: -80 °C

Storage Comment: Best use within three months from the date of receipt of this protein.

## Images



**Image 1.**