



[Go to Product page](#)

Datasheet for ABIN1349972

## COL4a6 Protein (AA 1-73) (GST tag)

### 1 Image

#### Overview

Quantity:	10 µg
Target:	COL4a6
Protein Characteristics:	AA 1-73
Origin:	Human
Source:	Wheat germ
Protein Type:	Recombinant
Purification tag / Conjugate:	This COL4a6 protein is labelled with GST tag.
Application:	Antibody Array (AA), Affinity Purification (AP), ELISA, Western Blotting (WB)

#### Product Details

Purpose:	COL4A6 (Human) Recombinant Protein (P01)
Sequence:	MLINKLWLLL VTLCLTEELA AAGEKSYGKP CGGQDCSGSC QCFPEKGARH NLQLLNDMAG RLYHFSEVLP NLF
Characteristics:	Human COL4A6 full-length ORF ( AAH05305, 1 a.a. - 73 a.a.) recombinant protein with GST-tag at N-terminal.
Purification:	in vitro wheat germ expression system

#### Target Details

Target:	COL4a6
Alternative Name:	COL4A6 ( <a href="#">COL4a6 Products</a> )

## Target Details

Background: Full Gene Name: collagen, type IV, alpha 6  
Synonyms: MGC88184

Gene ID: 1288

## Application Details

Application Notes: Optimal working dilution should be determined by the investigator.

Comment: Preparation method: in vitro, wheat germ expression system  
Product Quality tested by: 12.5% SDS-PAGE Stained with Coomassie Blue.

Restrictions: For Research Use only

## Handling

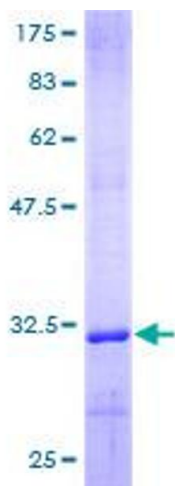
Buffer: 50 mM Tris-HCl, 10 mM reduced Glutathione, pH =8.0 in the elution buffer.

Handling Advice: Aliquot to avoid repeated freezing and thawing.

Storage: -80 °C

Storage Comment: Best use within three months from the date of receipt of this protein.

## Images



**Image 1.**