

Datasheet for ABIN1349986
COL8a2 Protein (GST tag)



[Go to Product page](#)

1 Image

Overview

Quantity:	10 µg
Target:	COL8a2 (COL8A2)
Origin:	Human
Source:	Wheat germ
Protein Type:	Recombinant
Purification tag / Conjugate:	This COL8a2 protein is labelled with GST tag.
Application:	Western Blotting (WB), ELISA, Antibody Array (AA), Affinity Purification (AP)

Product Details

Purpose:	COL8A2 (Human) Recombinant Protein (P01)
Sequence:	MLGTLTPLSS LLLLLLVVLV GCGPRASSGG GAGGAAGYAP VKYIQPMQKG PVGPPFREGK GQYLEMPLPL LPMDLKGEPG PPGKPGPRGP PGPPGFPGKP GMGKPLHGQ PGPAGPPGFS RMGKAGPPGL PGKVGPPGQP GLRGEPGIRG DQGLRGPPGP PGLPGPSGIT IPGKPGAQGV PGPPGFQGEF GPQGEPPPG DRGLKGDNGV GQPGLPGAPG QGGAPGPPGL PGPAGLGKPG LDGLPGAPGD KGESGPPGAF DETGIAGLHL PNGGVEGAVL GKGGKPFQGL GELSAHATPA FTAVLTSPFP ASGMPVKFDR TLYNGHSGYN PATGIFTCPV GGVYYFAYHV HVKGTNVVVA LYKNNVPATY TYDEYKKGYL DQASGGAVLQ LRPNDQVWVQ MPSDQANGLY STEYIHSSFS GFLLCPT
Characteristics:	Human COL8A2 full-length ORF (AAH96296.1, 1 a.a. - 427 a.a.) recombinant protein with GST-tag at N-terminal.
Purification:	in vitro wheat germ expression system

Target Details

Target:	COL8a2 (COL8A2)
Alternative Name:	COL8A2 (COL8A2 Products)
Background:	Gene: collagen, type VIII, alpha 2 Synonyms: FECD, FLJ00201, MGC116970, MGC116972, PPCD, PPCD2
Gene ID:	1296

Application Details

Application Notes:	Optimal working dilution should be determined by the investigator.
Restrictions:	For Research Use only

Handling

Buffer:	50 mM Tris-HCl, 10 mM reduced Glutathione, pH =8.0 in the elution buffer.
Handling Advice:	Aliquot to avoid repeated freezing and thawing.
Storage:	-80 °C
Storage Comment:	Best use within three months from the date of receipt of this protein.

Images

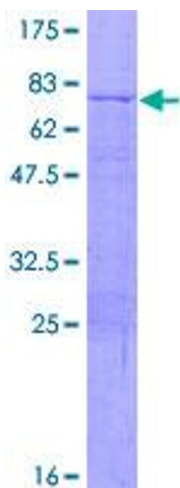


Image 1.