

Datasheet for ABIN1349996
COLEC10 Protein (AA 1-277) (GST tag)



[Go to Product page](#)

1 Image

Overview

Quantity:	25 µg
Target:	COLEC10
Protein Characteristics:	AA 1-277
Origin:	Human
Source:	Wheat germ
Protein Type:	Recombinant
Purification tag / Conjugate:	This COLEC10 protein is labelled with GST tag.
Application:	Western Blotting (WB), ELISA, Antibody Array (AA), Affinity Purification (AP)

Product Details

Purpose:	COLEC10 (Human) Recombinant Protein (P01)
Sequence:	MNGFASLLRR NQFILLVLFL LQIQLGLDI DSRPTAEVCA THTISPGPKG DDGEKGDGPE EGKHGKVGRM GPKGIGGELG DMGDQGNIGK TGPIGKKGDK GEKGLLGIPG EKGKAGTVCD CGRYRKFVVGQ LDISIARLKT SMKFKVNIA GIRETEEFY YIVQEEKNYR ESLTHCRIRG GMLAMPKDEA ANTLIADYVA KSGFFRVFIG VNDLEREGQY MFTDNTPLQN YSNWNEGEPS DPYGHEDCVE MLSSGRWNDT ECHLTMYFVC EFIKKKK
Characteristics:	Human COLEC10 full-length ORF (NP_006429.1, 1 a.a. - 277 a.a.) recombinant protein with GST-tag at N-terminal.
Purification:	in vitro wheat germ expression system

Target Details

Target:	COLEC10
Alternative Name:	COLEC10 (COLEC10 Products)
Background:	Full Gene Name: collectin sub-family member 10 (C-type lectin) Synonyms: CLL1,MGC118794,MGC118795
Gene ID:	10584
NCBI Accession:	NM_006438

Application Details

Application Notes:	Optimal working dilution should be determined by the investigator.
Comment:	Preparation method: in vitro, wheat germ expression system Product Quality tested by: 12.5% SDS-PAGE Stained with Coomassie Blue.
Restrictions:	For Research Use only

Handling

Buffer:	50 mM Tris-HCl, 10 mM reduced Glutathione, pH =8.0 in the elution buffer.
Handling Advice:	Aliquot to avoid repeated freezing and thawing.
Storage:	-80 °C
Storage Comment:	Best use within three months from the date of receipt of this protein.

Images

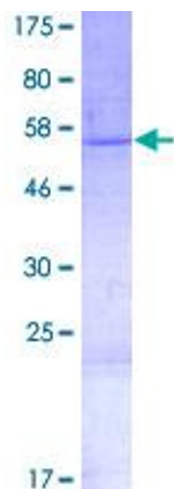


Image 1.