

Datasheet for ABIN1350009  
**COMMD1 Protein (AA 91-190) (GST tag)**



[Go to Product page](#)

1 Image

Overview

Quantity:	10 µg
Target:	COMMD1
Protein Characteristics:	AA 91-190
Origin:	Human
Source:	Wheat germ
Protein Type:	Recombinant
Purification tag / Conjugate:	This COMMD1 protein is labelled with GST tag.
Application:	ELISA, Western Blotting (WB), Antibody Array (AA), Affinity Purification (AP)

Product Details

Purpose:	COMMD1 (Human) Recombinant Protein (Q01)
Sequence:	AAVSKFWKS HKTKIRESLM NQSRWNSGLR GLSWRVDGKS QSRHSAQIHT PVAIIIELELG KYGQESEFLC LEFDEVKVNQ ILKTLSEVEE SISTLISQPN
Characteristics:	Human COMMD1 partial ORF ( NP_689729, 91 a.a. - 190 a.a.) recombinant protein with GST-tag at N-terminal.
Purification:	in vitro wheat germ expression system

Target Details

Target:	COMMD1
Alternative Name:	COMMD1 ( <a href="#">COMMD1 Products</a> )

## Target Details

Background:	Full Gene Name: copper metabolism (Murr1) domain containing 1 Synonyms: C2orf5,MGC27155,MURR1
Gene ID:	150684
NCBI Accession:	<a href="#">NM_152516</a>
Pathways:	<a href="#">Transition Metal Ion Homeostasis</a>

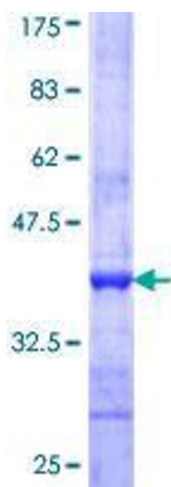
## Application Details

Application Notes:	Optimal working dilution should be determined by the investigator.
Comment:	Preparation method: in vitro, wheat germ expression system Product Quality tested by: 12.5% SDS-PAGE Stained with Coomassie Blue.
Restrictions:	For Research Use only

## Handling

Buffer:	50 mM Tris-HCl, 10 mM reduced Glutathione, pH =8.0 in the elution buffer.
Handling Advice:	Aliquot to avoid repeated freezing and thawing.
Storage:	-80 °C
Storage Comment:	Best use within three months from the date of receipt of this protein.

## Images



**Image 1.**