

Datasheet for ABIN1350023

COMMD5 Protein (AA 125-224) (GST tag)



[Go to Product page](#)

1 Image

Overview

Quantity:	10 µg
Target:	COMMD5
Protein Characteristics:	AA 125-224
Origin:	Human
Source:	Wheat germ
Protein Type:	Recombinant
Purification tag / Conjugate:	This COMMD5 protein is labelled with GST tag.
Application:	ELISA, Western Blotting (WB), Antibody Array (AA), Affinity Purification (AP)

Product Details

Purpose:	COMMD5 (Human) Recombinant Protein (Q01)
Sequence:	DLASVFGSQ RPLLDLSVAQQ QGAWLPHVAD FRWRVDVAIS TSALARSLQP SVLMQLKLSLSD GSAYRFEVPT AKFQELRYSV ALVLKEMADL EKRCERRLQD
Characteristics:	Human COMMD5 partial ORF (NP_054785, 125 a.a. - 224 a.a.) recombinant protein with GST-tag at N-terminal.
Purification:	in vitro wheat germ expression system

Target Details

Target:	COMMD5
Alternative Name:	COMMD5 (COMMD5 Products)

Target Details

Background:	Full Gene Name: COMM domain containing 5 Synonyms: FLJ13008,HCARG,HT002,MGC72046
Gene ID:	28991
NCBI Accession:	NM_014066

Application Details

Application Notes:	Optimal working dilution should be determined by the investigator.
Comment:	Preparation method: in vitro, wheat germ expression system Product Quality tested by: 12.5% SDS-PAGE Stained with Coomassie Blue.
Restrictions:	For Research Use only

Handling

Buffer:	50 mM Tris-HCl, 10 mM reduced Glutathione, pH =8.0 in the elution buffer.
Handling Advice:	Aliquot to avoid repeated freezing and thawing.
Storage:	-80 °C
Storage Comment:	Best use within three months from the date of receipt of this protein.

Images

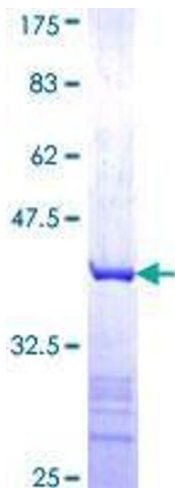


Image 1.