

Datasheet for ABIN1350065  
**COPS7A Protein (AA 1-275) (GST tag)**



[Go to Product page](#)

1 Image

Overview

Quantity:	25 µg
Target:	COPS7A
Protein Characteristics:	AA 1-275
Origin:	Human
Source:	Wheat germ
Protein Type:	Recombinant
Purification tag / Conjugate:	This COPS7A protein is labelled with GST tag.
Application:	ELISA, Western Blotting (WB), Antibody Array (AA), Affinity Purification (AP)

Product Details

Purpose:	COPS7A (Human) Recombinant Protein (P01)
Sequence:	MSAEVKVTGQ NQEQFLLLAK SAKGAALATL IHQVLEAPGV YVFGELLDMP NVRELAESDF ASTFRLLTVF AYGTYADYLA EARNLPPLTE AQKNKLRHLS VVTLAAKVVC IPYAVLLEAL ALRNVRQLED LVIEAVYADV LRGSLDQRNQ RLEVDYSIGR DIQRQDLSAI ARTLQEWCVG CEVVLSGIEE QVSRANQHKE QQLGLKQIE SEVANLKKTI KVT TAAAAAAA TSQDPEQHLLT ELREPAPGTN QRQPSKKASK GKGLRGS AKI WSKSN
Characteristics:	Human COPS7A full-length ORF ( NP_057403.1, 1 a.a. - 275 a.a.) recombinant protein with GST-tag at N-terminal.
Purification:	in vitro wheat germ expression system

## Target Details

Target:	COPS7A
Alternative Name:	COPS7A ( <a href="#">COPS7A Products</a> )
Background:	Full Gene Name: COP9 constitutive photomorphogenic homolog subunit 7A (Arabidopsis) Synonyms: CSN7A,MGC110877
Gene ID:	50813
NCBI Accession:	<a href="#">NM_016319</a>
Pathways:	<a href="#">Cell Division Cycle</a>

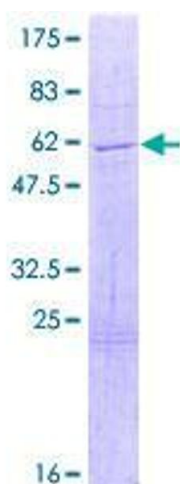
## Application Details

Application Notes:	Optimal working dilution should be determined by the investigator.
Comment:	Preparation method: in vitro, wheat germ expression system Product Quality tested by: 12.5% SDS-PAGE Stained with Coomassie Blue.
Restrictions:	For Research Use only

## Handling

Buffer:	50 mM Tris-HCl, 10 mM reduced Glutathione, pH =8.0 in the elution buffer.
Handling Advice:	Aliquot to avoid repeated freezing and thawing.
Storage:	-80 °C
Storage Comment:	Best use within three months from the date of receipt of this protein.

## Images



**Image 1.**