

Datasheet for ABIN1350093

## Coronin 6 Protein (CORO6) (AA 1-237) (GST tag)



[Go to Product page](#)

### 1 Image

#### Overview

Quantity:	10 µg
Target:	Coronin 6 (CORO6)
Protein Characteristics:	AA 1-237
Origin:	Human
Source:	Wheat germ
Protein Type:	Recombinant
Purification tag / Conjugate:	This Coronin 6 protein is labelled with GST tag.
Application:	ELISA, Western Blotting (WB), Antibody Array (AA), Affinity Purification (AP)

#### Product Details

Purpose:	CORO6 (Human) Recombinant Protein (P01)
Sequence:	MPSPWGWFAV TACGAQRNNF EEPVALQEMD TSNGVLLPFY DPDSSIVYLC GKGDSSIRYF EITDEPPFVH YLNTFSSKEP QRGMGFMPKR GLDVSKEIA RFYKLHERKC EPIIMTVPRK SDFQDDLYP DTPGPEPALE ADEWLSGQDA EPVLISLRDG YVPPKHREL R VTKRNILDVR PPSGPRRSQS ASDAPLSQHT LETLLEEIKA LRERVQAQEQ RITALENMLC ELVDGTD
Characteristics:	Human CORO6 full-length ORF ( AAH64514.1, 1 a.a. - 237 a.a.) recombinant protein with GST-tag at N-terminal.
Purification:	in vitro wheat germ expression system

#### Target Details

Target:	Coronin 6 (CORO6)
---------	-------------------

## Target Details

---

Alternative Name: CORO6 ([CORO6 Products](#))

Background: Full Gene Name: coronin 6  
Synonyms: FLJ14871

Gene ID: 84940

## Application Details

---

Application Notes: Optimal working dilution should be determined by the investigator.

Comment: Preparation method: in vitro, wheat germ expression system  
Product Quality tested by: 12.5% SDS-PAGE Stained with Coomassie Blue.

Restrictions: For Research Use only

## Handling

---

Buffer: 50 mM Tris-HCl, 10 mM reduced Glutathione, pH =8.0 in the elution buffer.

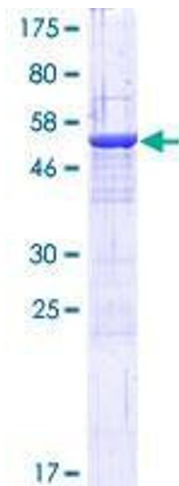
Handling Advice: Aliquot to avoid repeated freezing and thawing.

Storage: -80 °C

Storage Comment: Best use within three months from the date of receipt of this protein.

## Images

---



**Image 1.**