



[Go to Product page](#)

Datasheet for ABIN1350150

COX7A2 Protein (AA 1-56) (GST tag)

1 Image

Overview

Quantity:	10 µg
Target:	COX7A2
Protein Characteristics:	AA 1-56
Origin:	Human
Source:	Wheat germ
Protein Type:	Recombinant
Purification tag / Conjugate:	This COX7A2 protein is labelled with GST tag.
Application:	ELISA, Western Blotting (WB), Antibody Array (AA), Affinity Purification (AP)

Product Details

Purpose:	COX7A2 (Human) Recombinant Protein (Q01)
Sequence:	MLRNLLALRQ IGQRTISTAS RRHFKNKVPE KQKLFQEDDE IPLYLKGGVA DALLYR
Characteristics:	Human COX7A2 partial ORF (NP_001856, 1 a.a. - 56 a.a.) recombinant protein with GST-tag at N-terminal.
Purification:	in vitro wheat germ expression system

Target Details

Target:	COX7A2
Alternative Name:	COX7A2 (COX7A2 Products)
Background:	Full Gene Name: cytochrome c oxidase subunit VIIa polypeptide 2 (liver)

Target Details

Synonyms: COX7AL,COX7AL1,COXVIIa-L,MGC118950,MGC118951,MGC118952,MGC126875,MGC126877

Gene ID: 1347

NCBI Accession: [NM_001865](#)

Application Details

Application Notes: Optimal working dilution should be determined by the investigator.

Comment: Preparation method: in vitro, wheat germ expression system
Product Quality tested by: 12.5% SDS-PAGE Stained with Coomassie Blue.

Restrictions: For Research Use only

Handling

Buffer: 50 mM Tris-HCl, 10 mM reduced Glutathione, pH =8.0 in the elution buffer.

Handling Advice: Aliquot to avoid repeated freezing and thawing.

Storage: -80 °C

Storage Comment: Best use within three months from the date of receipt of this protein.

Images

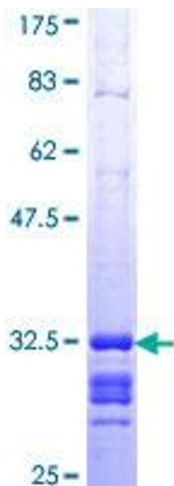


Image 1.