



[Go to Product page](#)

Datasheet for ABIN1350177

CPA6 Protein (AA 1-437) (GST tag)

1 Image

Overview

Quantity:	25 µg
Target:	CPA6
Protein Characteristics:	AA 1-437
Origin:	Human
Source:	Wheat germ
Protein Type:	Recombinant
Purification tag / Conjugate:	This CPA6 protein is labelled with GST tag.
Application:	ELISA, Western Blotting (WB), Antibody Array (AA), Affinity Purification (AP)

Product Details

Purpose:	CPA6 (Human) Recombinant Protein (P01)
Sequence:	MKCLGKRRGQ AAFLPLCWL FLKILQPGHS HLYNNRYAGD KVIRFIPKTE EEAYALKKIS YQLKVDLWQP SSISYVSEGT VTDVHIPQNG SRALLAFLQE ANIQYKVLIE DLQKTLEKGS SLHTQRNRRS LSGYNYEVYH SLEEIQNWML HLNKTHSGLI HMFSGRSYE GRCLFILKLG RRSRLKRAVW IDCGIHAREW IGPAFCQWV KEALLTYKSD PAMRKMLNHL YFYIMPVFNV DGYHFSWTND RFWRKTRSRN SRFRCRGVDA NRNWVKVWCD EGASMHPCDD TYCGPFPESE PEVKAVANFL RKHRKHIRAY LSFHAYAQML LYPYSYKYAT IPNFRCVESA AYKAVNALQS VYGVRYRYGP ASTTLYVSSG SSMDWAYKNG IPYAFAFELR DTGYFGFLLP EMLIKPTCTE TMLAVKNITM HLLKKCP
Characteristics:	Human CPA6 full-length ORF (NP_065094.2, 1 a.a. - 437 a.a.) recombinant protein with GST-tag at N-terminal.

Product Details

Purification: in vitro wheat germ expression system

Target Details

Target: CPA6

Alternative Name: CPA6 ([CPA6 Products](#))

Background: Full Gene Name: carboxypeptidase A6
Synonyms: CPAH

Gene ID: 57094

NCBI Accession: [NM_020361](#)

Application Details

Application Notes: Optimal working dilution should be determined by the investigator.

Comment: Preparation method: in vitro, wheat germ expression system
Product Quality tested by: 12.5% SDS-PAGE Stained with Coomassie Blue.

Restrictions: For Research Use only

Handling

Buffer: 50 mM Tris-HCl, 10 mM reduced Glutathione, pH =8.0 in the elution buffer.

Handling Advice: Aliquot to avoid repeated freezing and thawing.

Storage: -80 °C

Storage Comment: Best use within three months from the date of receipt of this protein.

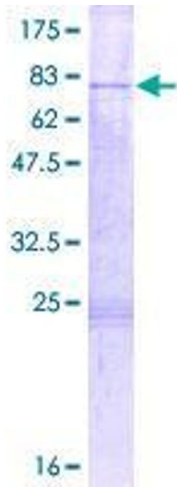


Image 1.