

Datasheet for ABIN1350194
CPM Protein (AA 1-443) (GST tag)



[Go to Product page](#)

1 Image

Overview

Quantity:	10 µg
Target:	CPM
Protein Characteristics:	AA 1-443
Origin:	Human
Source:	Wheat germ
Protein Type:	Recombinant
Purification tag / Conjugate:	This CPM protein is labelled with GST tag.
Application:	Western Blotting (WB), ELISA, Antibody Array (AA), Affinity Purification (AP)

Product Details

Purpose:	CPM (Human) Recombinant Protein (P01)
Sequence:	MDFPCLWLGL LLPLVAALDF NYHRQEGMEA FLKTVAQNYS SVTHLHSIGK SVKGRNLWVL VVGFRFPKEHR IGIPEFKYVA NMHGDETVGR ELLLHLIDYL VTSDGKDPEI TNLINSTRIH IMPSPMNPDPGF EAVKKPDCYY SIGREYNQY DLNRNFPDAF EYNNVSRQPE TVAVMKWLKT ETFVLSANLH GGALVASYPF DNGVQATGAL YSRSLTPDDD VFQYLAHTYA SRNPNMKKGD ECKNKMNFNP GVTNGYSWYP LQGGMQDYN IWAQCFEITL ELSCCKYPRE EKLPSFWNNN KASLIEYIKQ VHLGVKGQVF DQNGNPLPNV IVEVQDRKHI CPYRTNKYGE YYLLLLPGSY IINVTVPGHD PHITKVIPE KSNFNSALKK DILLPFQQL DSIPVSNPSC PMIPLYRNLP DHSAATKPSL FLFLVSLLI FFK
Characteristics:	Human CPM full-length ORF (NP_001005502.1, 1 a.a. - 443 a.a.) recombinant protein with GST-tag at N-terminal.

Product Details

Purification: in vitro wheat germ expression system

Target Details

Target: CPM

Alternative Name: CPM ([CPM Products](#))

Background: Full Gene Name: carboxypeptidase M
Synonyms:

Gene ID: 1368

NCBI Accession: [NM_001005502](#)

Application Details

Application Notes: Optimal working dilution should be determined by the investigator.

Comment: Preparation method: in vitro, wheat germ expression system
Product Quality tested by: 12.5% SDS-PAGE Stained with Coomassie Blue.

Restrictions: For Research Use only

Handling

Buffer: 50 mM Tris-HCl, 10 mM reduced Glutathione, pH =8.0 in the elution buffer.

Handling Advice: Aliquot to avoid repeated freezing and thawing.

Storage: -80 °C

Storage Comment: Best use within three months from the date of receipt of this protein.

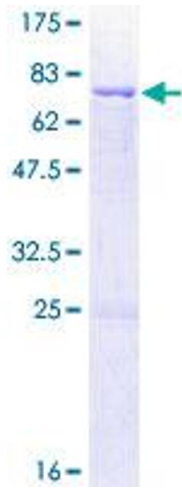


Image 1.