



[Go to Product page](#)

Datasheet for ABIN1350203

Copine II Protein (CPNE2) (AA 1-548) (GST tag)

1 Image

Overview

Quantity:	25 µg
Target:	Copine II (CPNE2)
Protein Characteristics:	AA 1-548
Origin:	Human
Source:	Wheat germ
Protein Type:	Recombinant
Purification tag / Conjugate:	This Copine II protein is labelled with GST tag.
Application:	ELISA, Western Blotting (WB), Antibody Array (AA), Affinity Purification (AP)

Product Details

Purpose:	CPNE2 (Human) Recombinant Protein (P01)
Sequence:	<p>MAHIPSGGAP AAGAAPMGPQ YCVCKVELSV SGQNLLDRDV TSKSDPFCVL FTENNGRWIE</p> <p>YDRTETAINN LNPAFSKKFV LDYHFEEVQK LKFALFDQDK SSMRLDEHDF LGQFSCSLGT</p> <p>IVSSKKITRP LLLLNDKPAG KGLITIAAQE LSDNRVITLS LAGRRLDKKD LFGKSDPFLE</p> <p>FYKPGDDGKW MLVHRTEVIK YTLDPVWKPF TVPLVSLCDG DMEKPIQVMC YDYDNDGGHD</p> <p>FIGEFQTSVS QMCEARDSVP LEFECINPKK QRKKKKNYKNS GIILRSCKI NRDYSFLDYI</p> <p>LGGCQLMFTV GIDFTASNGN PLDPSSLHYI NPMGTNEYLS AIWAVGQIIQ DYDSDKMFPA</p> <p>LGFGAQLPPD WKVSHEFAIN FNPTNPFCSG VDGIAQAYSA CLPHIRFYGP TNFSPIVNHV</p> <p>ARFAAQATQQ RTATQYFILL IITDGVISDM EETRHAVVQA SKLPMSIIIV GVGNAFDAAM</p> <p>EFLDGD SRML RSHTGEEAAR DIVQFVPFRE FRNAAKETLA KAVLAELPQQ VVQYFKHKNL</p> <p>PPTNSEPA</p>
Characteristics:	Human CPNE2 full-length ORF (NP_689940.3, 1 a.a. - 548 a.a.) recombinant protein with GST-

Product Details

tag at N-terminal.

Purification: in vitro wheat germ expression system

Target Details

Target: Copine II (CPNE2)

Alternative Name: CPNE2 ([CPNE2 Products](#))

Background: Full Gene Name: copine II
Synonyms: COPN2,CPN2,DKFZp686E06199,MGC16924

Gene ID: 221184

NCBI Accession: [NM_152727](#)

Application Details

Application Notes: Optimal working dilution should be determined by the investigator.

Comment: Preparation method: in vitro, wheat germ expression system
Product Quality tested by: 12.5% SDS-PAGE Stained with Coomassie Blue.

Restrictions: For Research Use only

Handling

Buffer: 50 mM Tris-HCl, 10 mM reduced Glutathione, pH =8.0 in the elution buffer.

Handling Advice: Aliquot to avoid repeated freezing and thawing.

Storage: -80 °C

Storage Comment: Best use within three months from the date of receipt of this protein.

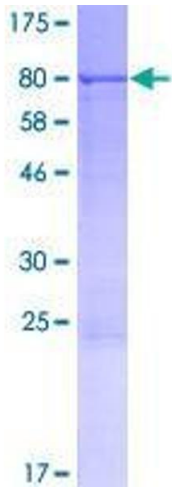


Image 1.