

Datasheet for ABIN1350206

Copine III Protein (CPNE3) (AA 164-244) (GST tag)



[Go to Product page](#)

1 Image

Overview

Quantity:	10 µg
Target:	Copine III (CPNE3)
Protein Characteristics:	AA 164-244
Origin:	Human
Source:	Wheat germ
Protein Type:	Recombinant
Purification tag / Conjugate:	This Copine III protein is labelled with GST tag.
Application:	ELISA, Western Blotting (WB), Antibody Array (AA), Affinity Purification (AP)

Product Details

Purpose:	CPNE3 (Human) Recombinant Protein (Q01)
Sequence:	EFHKQTS DGN WLMVHRTEVV KNNLNPVWRP FKISLNSLCY GDMDKTIKVE CYDYDNDGSH DLIGTFQTTM TKLKEASRSS P
Characteristics:	Human CPNE3 partial ORF (NP_003900.1, 164 a.a. - 244 a.a.) recombinant protein with GST-tag at N-terminal.
Purification:	in vitro wheat germ expression system

Target Details

Target:	Copine III (CPNE3)
Alternative Name:	CPNE3 (CPNE3 Products)

Target Details

Background:	Full Gene Name: copine III Synonyms: CPN3,KIAA0636,PRO1071
Gene ID:	8895
NCBI Accession:	NM_003909

Application Details

Application Notes:	Optimal working dilution should be determined by the investigator.
Comment:	Preparation method: in vitro, wheat germ expression system Product Quality tested by: 12.5% SDS-PAGE Stained with Coomassie Blue.
Restrictions:	For Research Use only

Handling

Buffer:	50 mM Tris-HCl, 10 mM reduced Glutathione, pH =8.0 in the elution buffer.
Handling Advice:	Aliquot to avoid repeated freezing and thawing.
Storage:	-80 °C
Storage Comment:	Best use within three months from the date of receipt of this protein.

Images

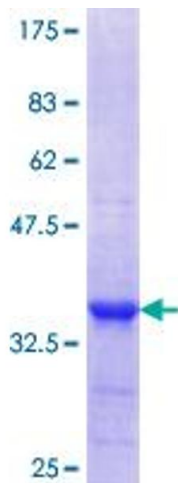


Image 1.