



[Go to Product page](#)

Datasheet for ABIN1350248

## CPT1B Protein (AA 673-772) (GST tag)

### 1 Image

#### Overview

Quantity:	10 µg
Target:	CPT1B
Protein Characteristics:	AA 673-772
Origin:	Human
Source:	Wheat germ
Protein Type:	Recombinant
Purification tag / Conjugate:	This CPT1B protein is labelled with GST tag.
Application:	Western Blotting (WB), ELISA, Antibody Array (AA), Affinity Purification (AP)

#### Product Details

Purpose:	CPT1B (Human) Recombinant Protein (Q01)
Sequence:	FLAEVLSEPW RLSTSQIQPS QIRMFDPPEQH PNHLGAGGGF GPVADDGYGV SYMIAGENTI FFHISSKFSS SETNAQRFGN HIRKALLDIA DLFQVPKAYS
Characteristics:	Human CPT1B partial ORF ( NP_004368, 673 a.a. - 772 a.a.) recombinant protein with GST-tag at N-terminal.
Purification:	in vitro wheat germ expression system

#### Target Details

Target:	CPT1B
Alternative Name:	CPT1B ( <a href="#">CPT1B Products</a> )

## Target Details

Background:	Full Gene Name: carnitine palmitoyltransferase 1B (muscle) Synonyms: CPT1-M,KIAA1670,M-CPT1,MCCPT1
Gene ID:	1375
NCBI Accession:	<a href="#">NM_004377</a>
Pathways:	<a href="#">AMPK Signaling</a> , <a href="#">Monocarboxylic Acid Catabolic Process</a>

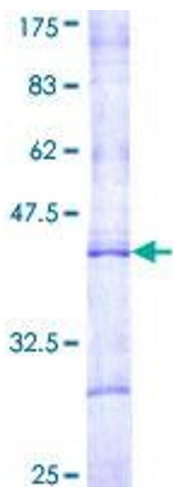
## Application Details

Application Notes:	Optimal working dilution should be determined by the investigator.
Comment:	Preparation method: in vitro, wheat germ expression system Product Quality tested by: 12.5% SDS-PAGE Stained with Coomassie Blue.
Restrictions:	For Research Use only

## Handling

Buffer:	50 mM Tris-HCl, 10 mM reduced Glutathione, pH =8.0 in the elution buffer.
Handling Advice:	Aliquot to avoid repeated freezing and thawing.
Storage:	-80 °C
Storage Comment:	Best use within three months from the date of receipt of this protein.

## Images



**Image 1.**