



[Go to Product page](#)

Datasheet for ABIN1350250

CPT1C Protein (AA 1-792) (GST tag)

1 Image

Overview

Quantity:	25 µg
Target:	CPT1C
Protein Characteristics:	AA 1-792
Origin:	Human
Source:	Wheat germ
Protein Type:	Recombinant
Purification tag / Conjugate:	This CPT1C protein is labelled with GST tag.
Application:	ELISA, Western Blotting (WB), Antibody Array (AA), Affinity Purification (AP)

Product Details

Purpose:	CPT1C (Human) Recombinant Protein (P01)
Sequence:	MAEAHQAVGF RPSLTSDGAE VELSAVLQE IYLSGLRSWK RHLSRFWPDF LTGVFPASPL SWLFLFSAIQ LAWFLQLDPS LGLMEKIKEL LPDWGGQHHG LRGVLAALF ASCLWGALIF TLHVALRLLL SYHGWLLEPH GAMSSPTKTW LALVRIFSGR HPMLFSYQRS LPRQPVPVSVQ DTRVKYLESV RPILSDEDFD WTAVLAQEFL RLQASLLQWY LRLKSWWASN YVSDWWEFV YLRSRNPLMV NSNYMMAAR AGNAVHALLL YRHRLNRQEI PPTLLMGMRP LCSAQYEKIF NTTRIPGVQK DYIRHLHDSQ HVAVFHRGRF FRMGTHSRNS LLSPRALEQQ FQRILDDPSP ACPHEEHLAA LTAAPRGTTA QVRTSLKTQA AEALEAVEGA AFFVSLDAEP AGLTREDPAA SLDAYAHALL AGRGHDRWFD KSFTLIVFSN GKLGLSVEHS WADCPISGHM WEFTLATECF QLGYSTDGHC KGHPDPTLPQ PQRLQWDLPD QIHSSISLAL RGAKILSENV DCHVVPFSLF GKSFIRRCHL SSSDFIQIAL QLAHFRDRGQ FCLTYESAMT RLFLEGRTEV VRSCREACN FVRAMEDKEK TDPQCLALFR VAVDKHQALL KAAMSGQGVV RHLFALYIVS RFLHLQSPFL

Product Details

TQVHSEQWQL STSQIPVQQM HLFDVHNYPD YVSSGGGFGP ADDHGYGVSY IFMGDGMITF
HISSKKSSTK TDSHRLGQHI EDALLDVASL FQAGQHFKRR FRGSGKENS R HRCGFLSRQT
GASKASMTST DF

Characteristics: Human CPT1C full-length ORF (AAH29104.1, 1 a.a. - 792 a.a.) recombinant protein with GST-tag at N-terminal.

Purification: in vitro wheat germ expression system

Target Details

Target: CPT1C

Alternative Name: CPT1C ([CPT1C Products](#))

Background: Full Gene Name: carnitine palmitoyltransferase 1C
Synonyms: CATL1,CPT1P,CPTIC,FLJ23809

Gene ID: 126129

Pathways: [AMPK Signaling](#), [Monocarboxylic Acid Catabolic Process](#)

Application Details

Application Notes: Optimal working dilution should be determined by the investigator.

Comment: Preparation method: in vitro, wheat germ expression system
Product Quality tested by: 12.5% SDS-PAGE Stained with Coomassie Blue.

Restrictions: For Research Use only

Handling

Buffer: 50 mM Tris-HCl, 10 mM reduced Glutathione, pH =8.0 in the elution buffer.

Handling Advice: Aliquot to avoid repeated freezing and thawing.

Storage: -80 °C

Storage Comment: Best use within three months from the date of receipt of this protein.

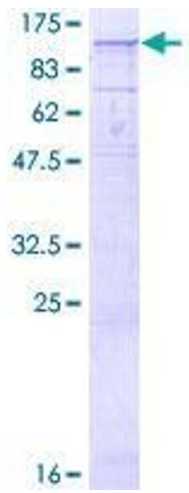


Image 1.