



[Go to Product page](#)

Datasheet for ABIN1350257

## CPXCR1 Protein (AA 1-301) (GST tag)

### 1 Image

#### Overview

Quantity:	25 µg
Target:	CPXCR1
Protein Characteristics:	AA 1-301
Origin:	Human
Source:	Wheat germ
Protein Type:	Recombinant
Purification tag / Conjugate:	This CPXCR1 protein is labelled with GST tag.
Application:	ELISA, Western Blotting (WB), Antibody Array (AA), Affinity Purification (AP)

#### Product Details

Purpose:	CPXCR1 (Human) Recombinant Protein (P01)
Sequence:	MSSPTKEGSD TAGNAHKNSE NEPPNDCSTD IESPSADPNM IYQVETNPIN REPGTATSQE DVVPQAAENS ELETEIQKDQ REEDLKEELL LLQTPIPRKL VSHKPLNDRS RSHSGKVEMK ANNFPINHKT RFRLSTSWRV PFINSHEIRS MILHLLCDRY FSQAAGCQNT MWVKRKYIAC LYHPNSFTHH ERAITFRRPS RVHYRPLTE RMTSGKFCKS TDTKGKCRFR AIVRSVLFVS QIQIESIFNI KGFVDILTYI HTMNVMITNT NNGWKYFCPI CGRLFNTYSE LRQHSCSSSG N
Characteristics:	Human CPXCR1 full-length ORF ( NP_149037.2, 1 a.a. - 301 a.a.) recombinant protein with GST-tag at N-terminal.
Purification:	in vitro wheat germ expression system

## Target Details

Target:	CPXCR1
Alternative Name:	CPXCR1 ( <a href="#">CPXCR1 Products</a> )
Background:	Full Gene Name: CPX chromosome region, candidate 1 Synonyms:
Gene ID:	53336
NCBI Accession:	<a href="#">NM_033048</a>

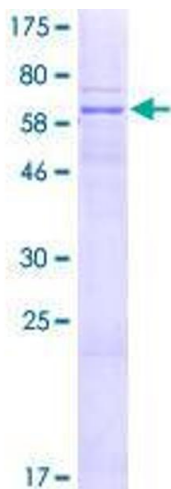
## Application Details

Application Notes:	Optimal working dilution should be determined by the investigator.
Comment:	Preparation method: in vitro, wheat germ expression system Product Quality tested by: 12.5% SDS-PAGE Stained with Coomassie Blue.
Restrictions:	For Research Use only

## Handling

Buffer:	50 mM Tris-HCl, 10 mM reduced Glutathione, pH =8.0 in the elution buffer.
Handling Advice:	Aliquot to avoid repeated freezing and thawing.
Storage:	-80 °C
Storage Comment:	Best use within three months from the date of receipt of this protein.

## Images



**Image 1.**